

ACCELERATOR CONTROL, FUEL & EXHAUST SYSTEMS

SECTION FE


CONTENTS

PREPARATION	2	FUEL SYSTEM	4
Special Service Tool	2	Fuel Tank	4
ACCELERATOR CONTROL SYSTEM	3	Fuel Pump And Gauge.....	5
Accelerator Control System.....	3	EXHAUST SYSTEM	6
Adjusting Accelerator Wire.....	3		

GI
MA
EM
LC
EC
FE
CL
MT
AT
FA
RA
BR
ST
RS
BT
HA
EL
IDX

PREPARATION

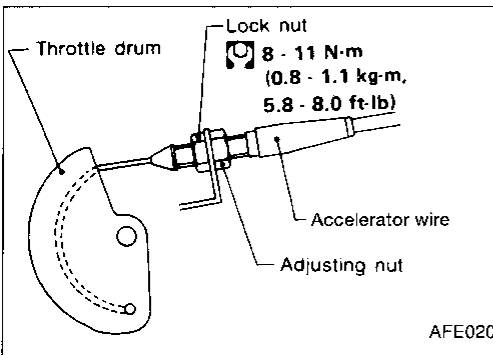
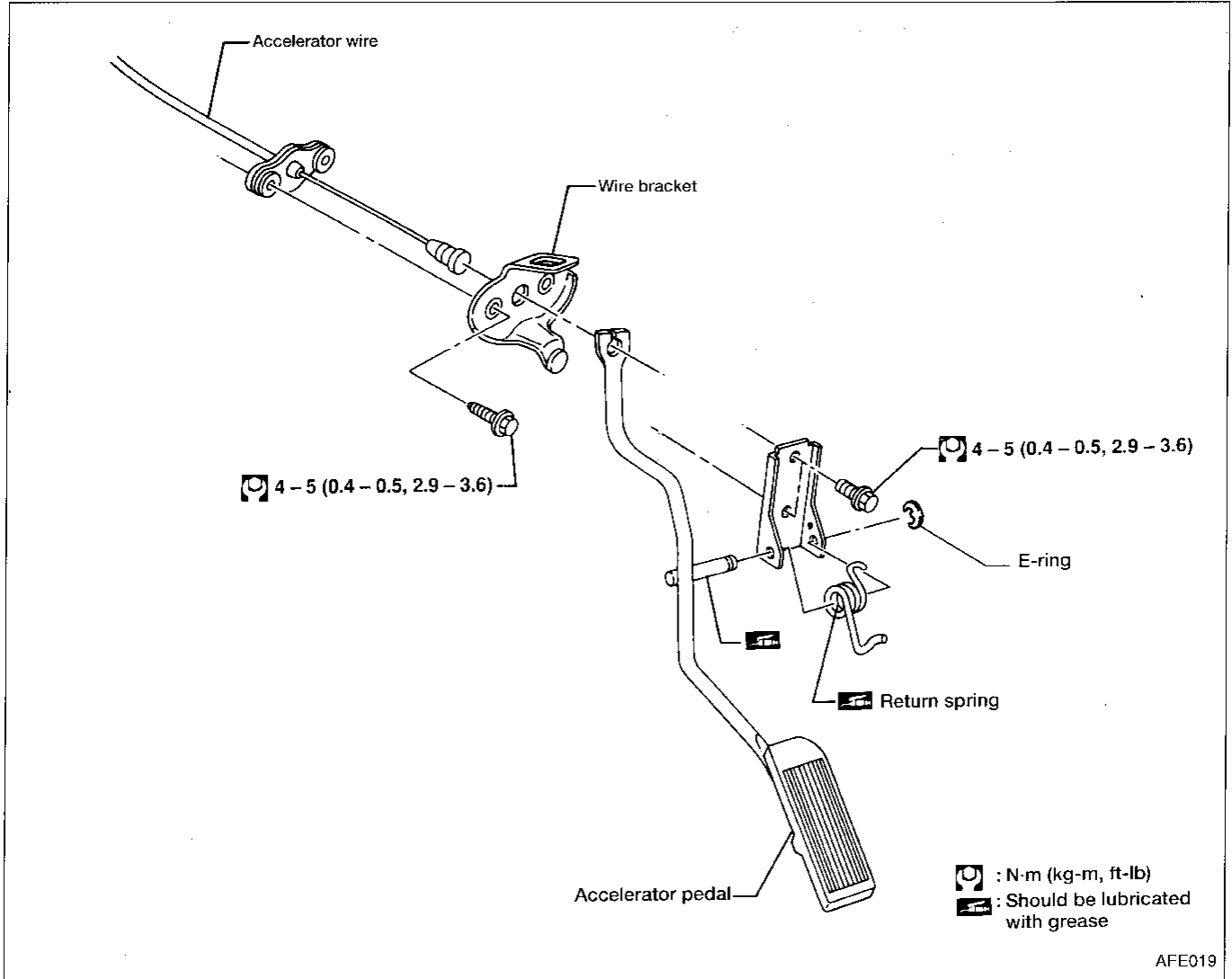
Special Service Tool

Tool number (Kent-Moore No.) Tool name	Description
KV999G0010 (J38879) Fuel tank lock ring socket	 <p data-bbox="1013 321 1422 380">Removing and installing fuel tank lock ring</p>

Accelerator Control System

CAUTION:

- When removing accelerator cable, make a mark to indicate lock nut's initial position.
- Check that throttle valve opens fully when accelerator pedal is fully depressed. Also check that it returns to idle position when pedal is released.
- Check accelerator control parts for improper contact with any adjacent parts.
- When connecting accelerator wire, be careful not to twist or scratch wire.
- Refer to "AUTOMATIC SPEED CONTROL DEVICE" in EL section for ASCD wire adjustment.



Adjusting Accelerator Wire

CAUTION:

- Make sure the ASCD wire is not pulling the throttle drum.
 - Refer to "AUTOMATIC SPEED CONTROL DEVICE" in EL section for ASCD wire adjustment.
1. Loosen lock nut and tighten adjusting nut until throttle drum starts to move.
 2. From that position turn back adjusting nut 1.5 to 2 turns, and secure lock nut.

FUEL SYSTEM

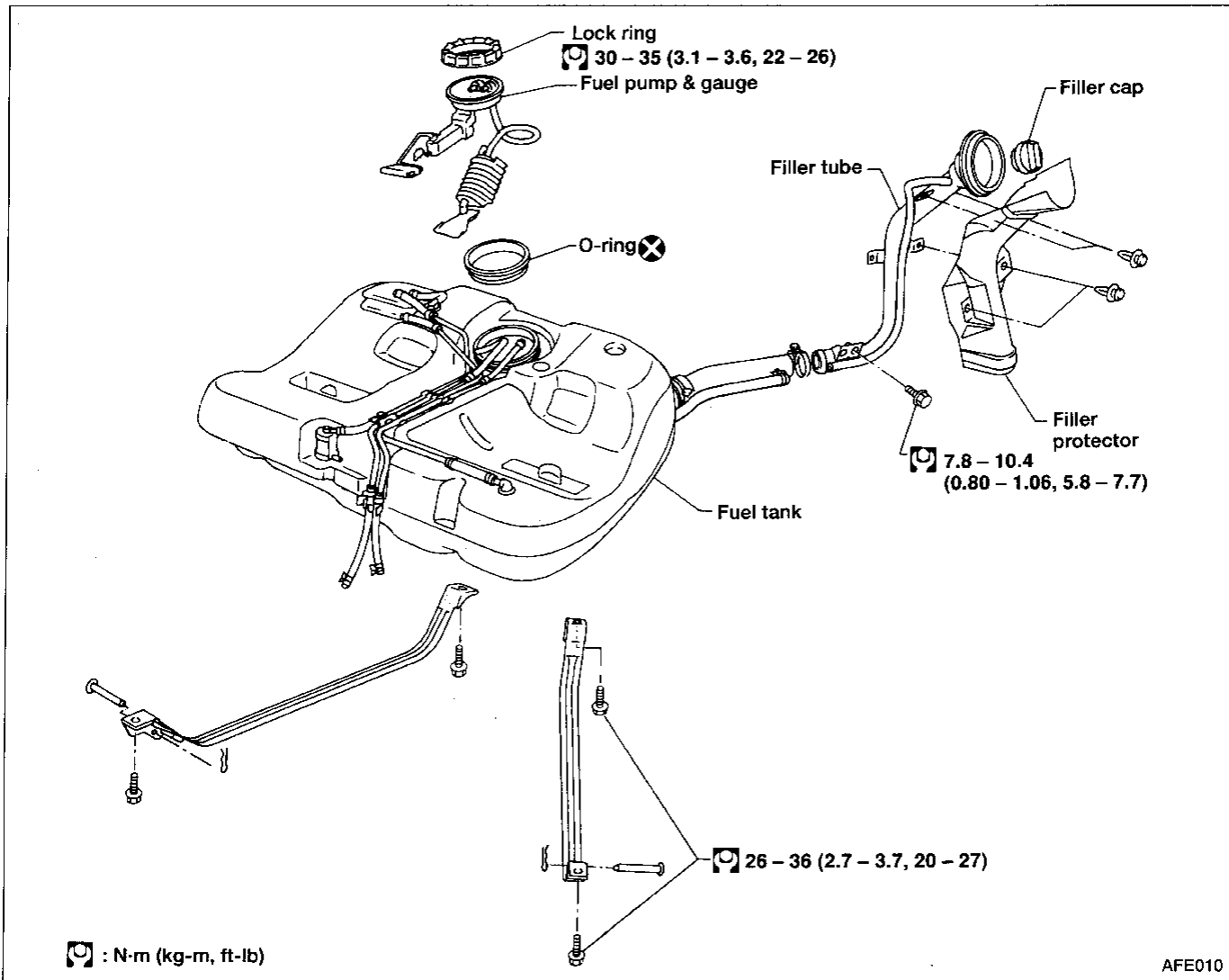
Fuel Tank

WARNING:

- Be sure to furnish workshop with a CO₂ fire extinguisher.
- Do not smoke while servicing fuel system. Keep open flames and sparks away from work area.

CAUTION:

- Before removing fuel line parts carry out the following procedures:
 - a. Put drained fuel in an explosion-proof container and put the lid on securely.
 - b. Release fuel pressure from fuel line. Refer to "Changing Fuel Filter" in MA section.
 - c. Disconnect battery ground cable.
- When installing fuel check valve, be careful of its designated direction. (Refer to EC section.)
- Always replace O-ring and clamps with new ones.
- Do not kink or twist tubes when they are being installed.
- Do not tighten hose clamps excessively to avoid damaging hoses.
- After installing tubes, run engine and check for fuel leaks at connections.



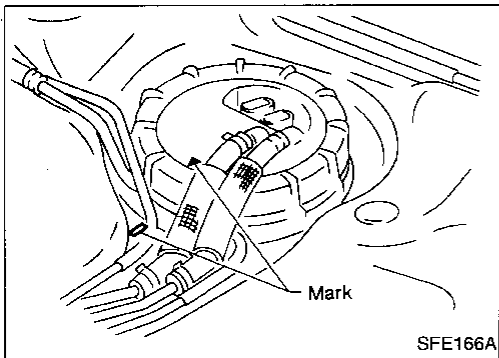
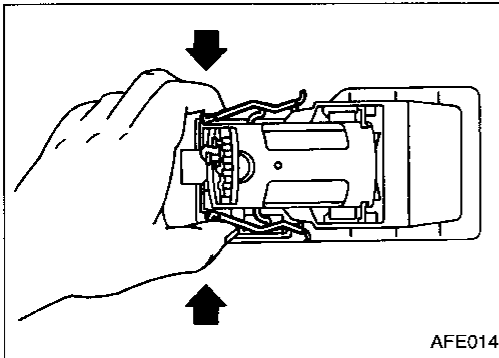
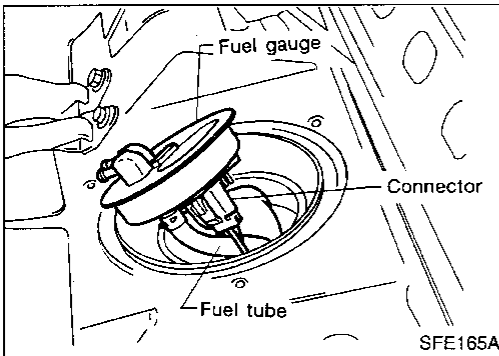
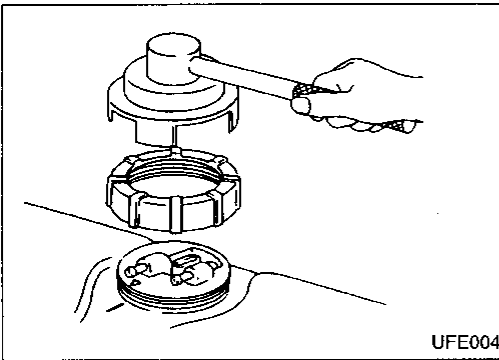
FUEL SYSTEM

Fuel Tank (Cont'd)

FUEL PUMP AND GAUGE

Removal

1. Release fuel pressure from fuel line.
Refer to MA section ("Changing Fuel Filter", "ENGINE MAINTENANCE").
2. Remove inspection hole cover located under rear seat.
3. Disconnect connectors and fuel tubes.
4. Remove lock ring (Use S.S.T. J38879).



5. Remove fuel gauge assembly and disconnect tubes and electrical connector.

6. Remove fuel pump by pinching the two (2) tabs together as shown in the figure while lifting out of fuel tank bracket.

If fuel sending unit needs to be removed, pull up large tab on sending unit, opposite the end of the float. The sending unit lifts straight out of fuel tank bracket.

Installation

- Installation procedure is basically the reverse order of removal.

CAUTION:

- Always replace O-ring with a new one.
- Align parts with alignment marks.
- Tighten lock ring to specified torque.
- After installation, run engine and check for leaks at connections.

GI

MA

EM

LC

EC

FE

CL

MT

AT

FA

RA

BR

ST

RS

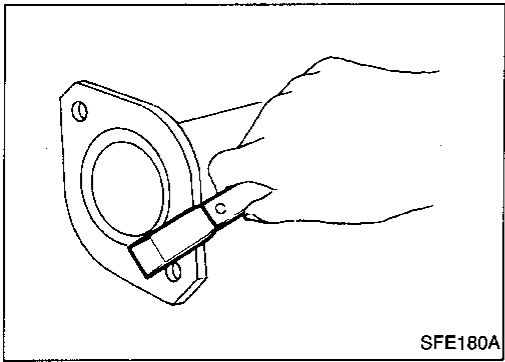
BT

HA

EL

IDX

EXHAUST SYSTEM



CAUTION:

- Always replace exhaust gaskets with new ones when reassembling.
If gasket remains on flange surface, scrape off completely as shown at left.
- With engine running, check all tube connections for exhaust gas leaks, and entire system for unusual noises.
- Check to ensure that mounting brackets and mounting insulators are installed properly and free from undue stress. Improper installation could result in excessive noise or vibration.

