

SECTION **FL**
FUEL SYSTEM

A
FL
C
D
E
F
G
H
I
J
K
L
M

CONTENTS

PREPARATION	2	FUEL TANK	8
Commercial Service Tools	2	Removal and Installation	8
FUEL SYSTEM	3	REMOVAL	8
Checking Fuel Lines	3	INSTALLATION	9
General Precautions	3	Inspection After Installation	9
FUEL LEVEL SENSOR UNIT, FUEL FILTER AND		SERVICE DATA AND SPECIFICATIONS (SDS)	10
FUEL PUMP ASSEMBLY	5	Standard and Limit	10
Removal and Installation	5	QR25DE	10
REMOVAL	5	VQ35DE	10
INSPECTION AFTER REMOVAL	6		
INSTALLATION	7		
INSPECTION AFTER INSTALLATION	7		

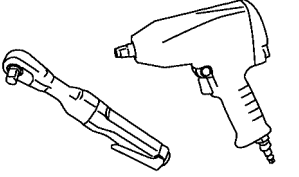
PREPARATION

PREPARATION

PFP:00002

Commercial Service Tools

EBS008QK

Tool name	Description
<p data-bbox="164 323 272 348">Power tool</p>  <p data-bbox="852 527 922 541">FBIC0190E</p>	<p data-bbox="1013 323 1268 348">Loosening bolts and nuts</p>

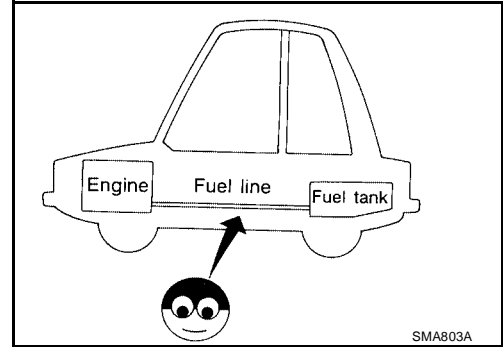
FUEL SYSTEM

PF17503

Checking Fuel Lines

EBS008QL

Inspect fuel lines, filler cap and tank for improper attachment, leaks, cracks, damage, loose connections, chafing or deterioration. If necessary, repair or replace faulty parts.



General Precautions

EBS008QM

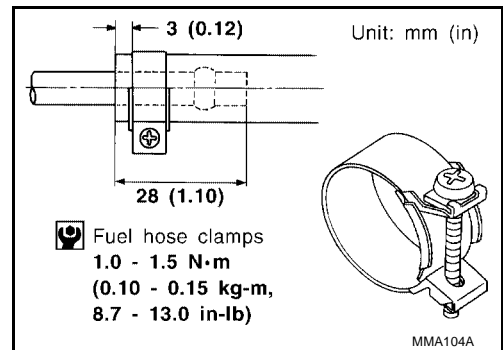
WARNING:

When replacing fuel line parts, be sure to observe the following.

- Put a “CAUTION: FLAMMABLE” sign in the work area.
- Be sure to work in a well ventilated area and have a CO² fire extinguisher.
- Do not smoke while working on the fuel system. Keep open flames and sparks away from the work area.

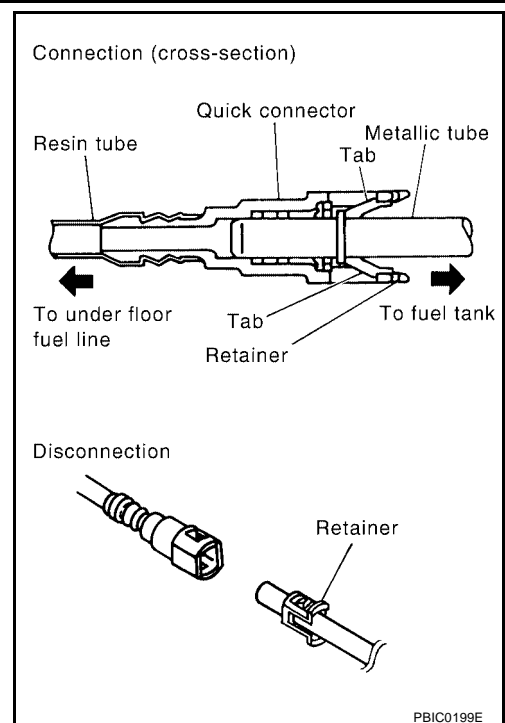
CAUTION:

- Before removing fuel line parts, carry out the following procedures:
 - Put drained fuel in an explosion-proof container and put the lid on securely. Keep the container in safe area.
 - Release fuel pressure from the fuel lines. Refer to [EC-670, "FUEL PRESSURE RELEASE"](#).
 - Disconnect the battery ground cable.
- Always replace O-rings and clamps with new ones.
- Do not kink or twist tubes when they are being installed.
- Do not tighten hose clamps excessively to avoid damaging hoses. Tighten high-pressure rubber hose clamp so that clamp end is 3 mm (0.12 in) from hose end. Tightening torque specifications are the same for all rubber hose clamps. Ensure that screw does not contact adjacent parts.



FUEL SYSTEM

- After connecting the fuel tube quick connectors, make sure the quick connectors are secure. Ensure that the connector and resin tube do not contact any adjacent parts.
- After installing tubes, run engine and check for fuel leaks at connections.
- Use only a genuine NISSAN fuel filler cap as a replacement. If an incorrect fuel filler cap is used, the MIL may come on.
- For servicing "Evaporative Emission System" parts, refer to [EC-1286, "EVAPORATIVE EMISSION SYSTEM"](#).
- For servicing "On Board Refueling Vapor Recovery (ORVR)" parts, refer to [EC-1292, "ON BOARD REFUELING VAPOR RECOVERY \(ORVR\)"](#).

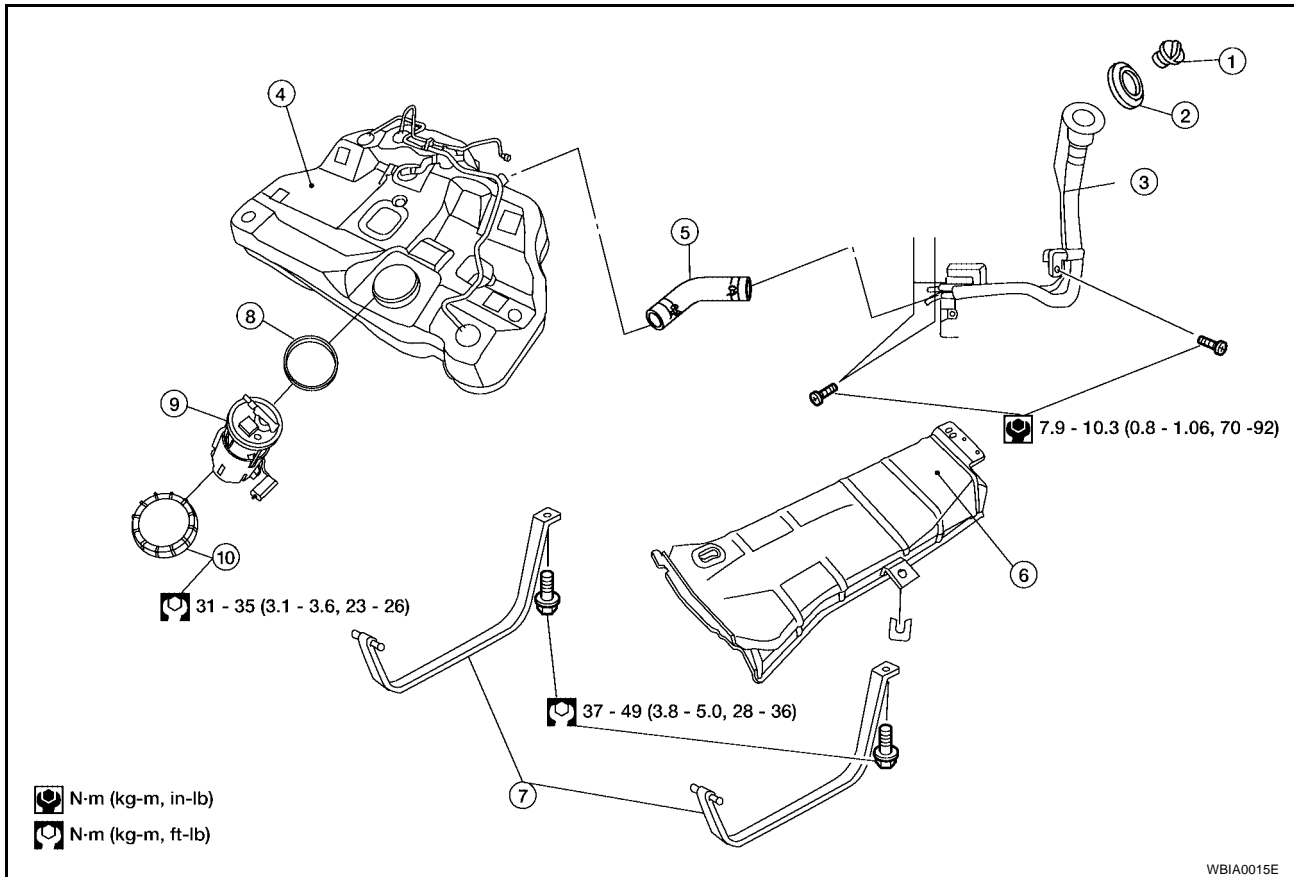


FUEL LEVEL SENSOR UNIT, FUEL FILTER AND FUEL PUMP ASSEMBLY

FUEL LEVEL SENSOR UNIT, FUEL FILTER AND FUEL PUMP ASSEMBLY PFP:17042

Removal and Installation

EBS0080N



- | | | |
|------------------------------|---------------------|------------------------|
| 1. Fuel filler cap | 2. Grommet | 3. Fuel filler tube |
| 4. Fuel tank | 5. Fuel filler hose | 6. Fuel tank protector |
| 7. Fuel tank mounting straps | 8. Ring seal | 9. Fuel pump assembly |
| 10. Fuel pump locking ring | | |

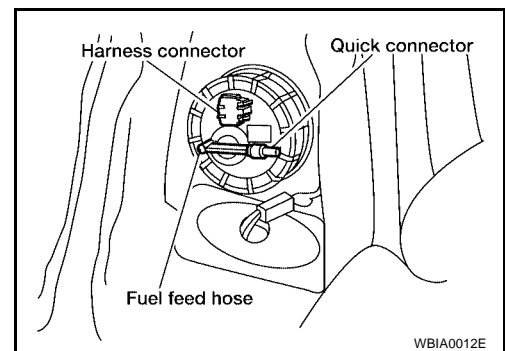
REMOVAL

WARNING:

Read "General Precautions" before working on the fuel system.

Refer to [FL-3, "General Precautions"](#).

1. Unscrew the fuel filler cap to release the pressure inside the fuel tank.
2. Release the fuel pressure from the fuel lines. Refer to [EC-670, "FUEL PRESSURE RELEASE"](#).
3. Remove the rear seat bottom. Refer to [SE-19, "Removal and Installation"](#).
4. Remove the fuel pump inspection hole cover.
5. Disconnect the harness connector, and fuel feed hose from the fuel pump assembly.



WBIA0012E

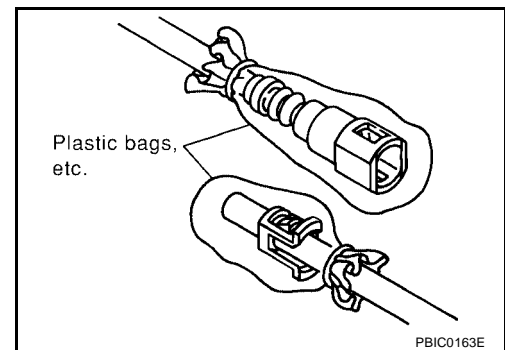
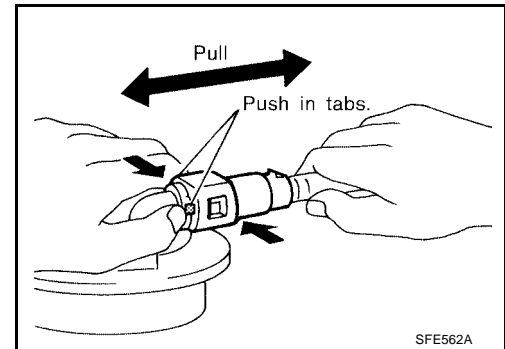
FUEL LEVEL SENSOR UNIT, FUEL FILTER AND FUEL PUMP ASSEMBLY

Remove the quick connector as follows:

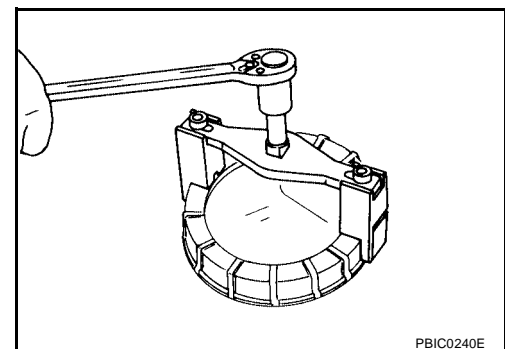
- Hold the sides of the connector, push in tabs and pull out the tube.
- If the connector and the tube are stuck together, push and pull several times until they start to move. Then disconnect them by pulling.

CAUTION:

- The tube can be removed when the tabs are completely depressed. Do not twist it more than necessary.
- Do not use any tools to remove the quick connector.
- Keep the resin tube away from heat. Be especially careful when welding near the tube.
- Prevent acid liquid such as battery electrolyte, etc. from getting on the resin tube.
- Do not bend or twist the tube during installation and removal.
- Only when the tube is replaced, remove the remaining retainer on the tube or fuel pump assembly.
- When the tube or fuel pump assembly is replaced, also replace the retainer with a new one (green colored retainer).
- To keep the connecting portion clean and to avoid damage and foreign materials, cover them completely with plastic bags or something similar.



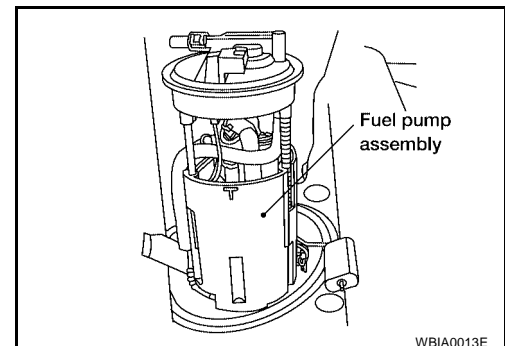
6. Using a lock ring wrench, remove the lock ring.



7. Remove the fuel pump assembly.

CAUTION:

- Do not bend the float arm during removal.



INSPECTION AFTER REMOVAL

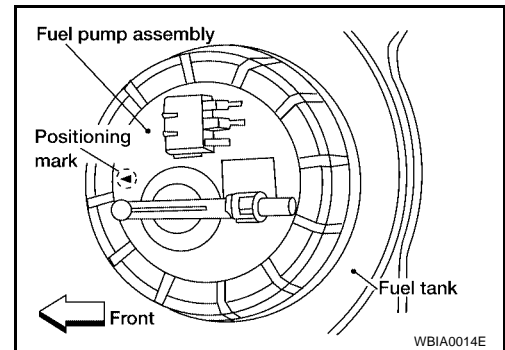
Make sure the fuel pump is free from defects and foreign materials.

FUEL LEVEL SENSOR UNIT, FUEL FILTER AND FUEL PUMP ASSEMBLY

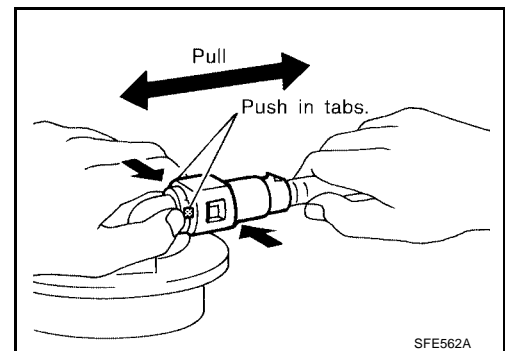
INSTALLATION

Installation is in the reverse order of removal.

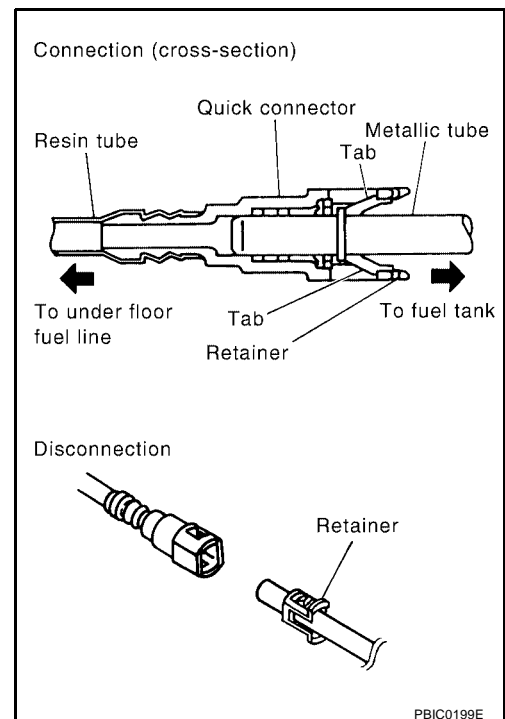
- Install the fuel pump assembly with the front mark (arrow) facing the front of the vehicle.



- Connect the quick connector as follows:
 1. Check the connection for damage or any foreign materials.
 2. Align the connector with the tube, then insert the connector straight into the tube until a click is heard.
 3. Pull the tube and the connector to make sure they are securely connected.



- Visually confirm that the two retainer tabs are connected to the connector.



INSPECTION AFTER INSTALLATION

- Start the engine and let it idle and make sure there are no fuel leaks at the fuel system connections.

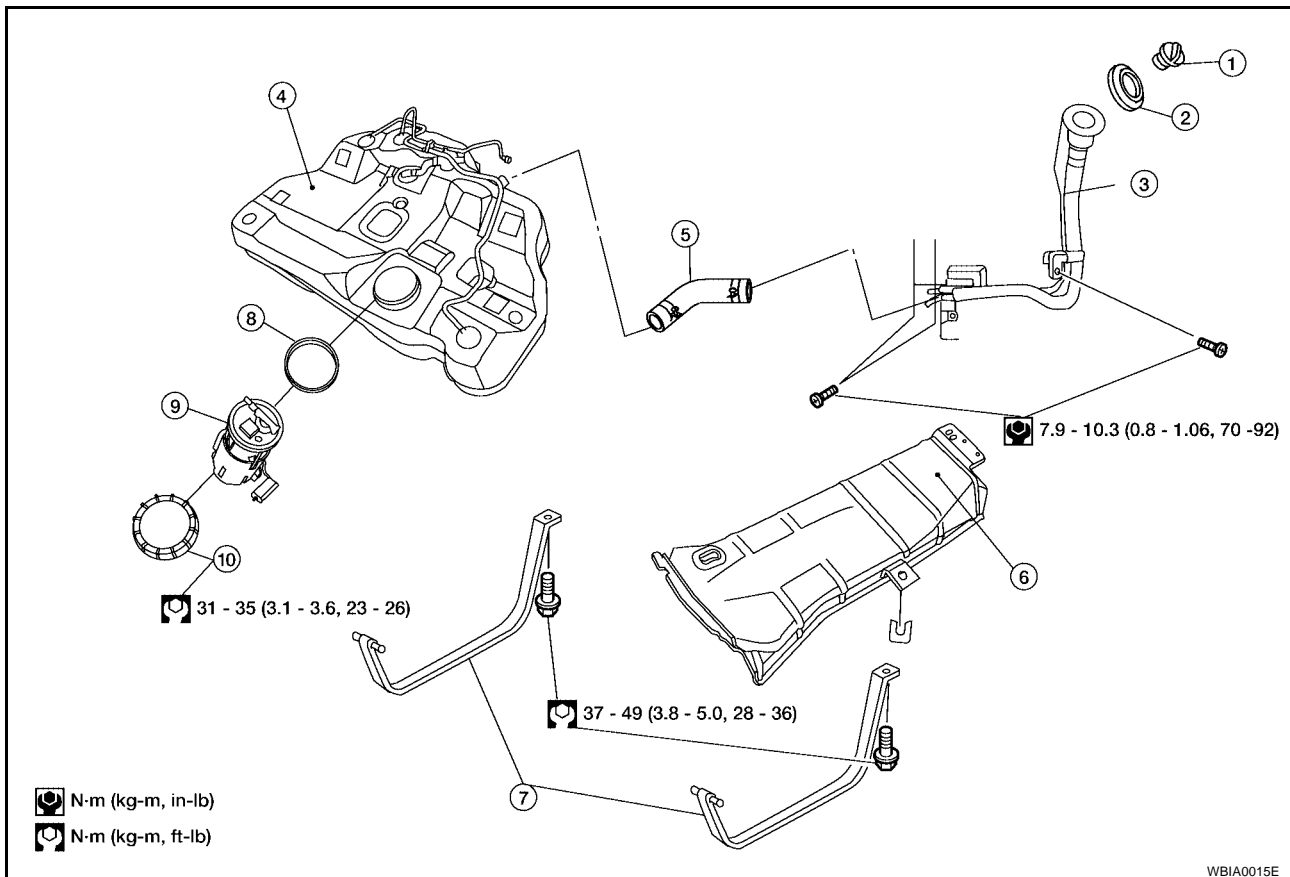
FUEL TANK

FUEL TANK

PF17202

Removal and Installation

EBS00800



- | | | |
|------------------------------|---------------------|------------------------|
| 1. Fuel filler cap | 2. Grommet | 3. Fuel filler tube |
| 4. Fuel tank | 5. Fuel filler hose | 6. Fuel tank protector |
| 7. Fuel tank mounting straps | 8. Ring seal | 9. Fuel pump assembly |
| 10. Fuel pump locking ring | | |

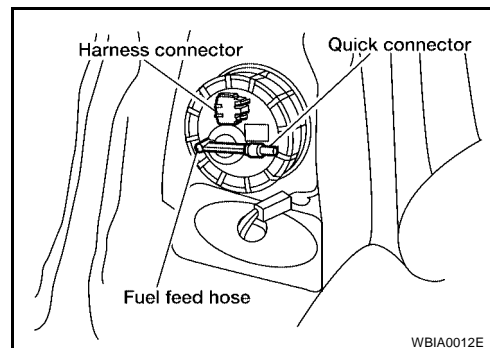
REMOVAL

WARNING:

Read "General Precautions" before working on the fuel system.

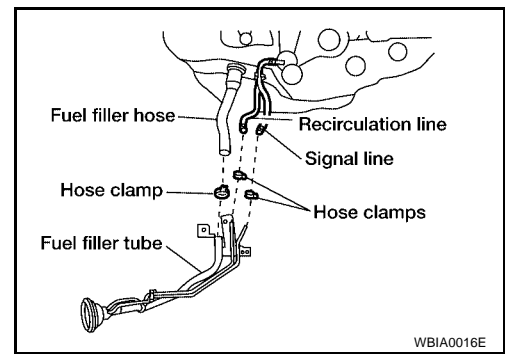
Refer to [FL-3, "General Precautions"](#).

1. Release fuel pressure from fuel line, Refer to [EC-51, "FUEL PRESSURE RELEASE"](#) (QR25DE), [EC-670, "FUEL PRESSURE RELEASE"](#) (VQ35DE).
2. Open the fuel filler cap to release the pressure inside the fuel tank.
3. Remove rear seat bottom. Refer to [SE-19, "Removal and Installation"](#).
4. Remove the inspection hole cover, harness connector and fuel feed hose quick connector. Refer to [FL-5, "Removal and Installation"](#).
5. Remove the center exhaust tube, with muffler(s). Refer to [EX-6, "Removal and Installation"](#).



FUEL TANK

6. Disconnect the fuel filler hose, recirculation hose and signal hose at the fuel tank side.
7. Disconnect the three parking brake cable mounting brackets on each cable and position the cables out of the way. Refer to [PB-2, "Components"](#).
8. Remove the fuel tank protector.
9. Disconnect the fuel tank mounting straps while supporting the fuel tank.
10. Remove the fuel tank.



INSTALLATION

1. Installation is in the reverse order of removal.
 - Before tightening the fuel tank mounting straps, temporarily install the filler hose, recirculation hose, and signal hose. Tighten all fasteners to specification.
 - To connect the quick connector, refer to [FL-5, "Removal and Installation"](#).

Inspection After Installation

Run the engine and check for fuel leaks at the fuel system tube and hose connections.

EBS008QP

SERVICE DATA AND SPECIFICATIONS (SDS)

SERVICE DATA AND SPECIFICATIONS (SDS)

PF0:00030

Standard and Limit QR25DE

EBS00800

Fuel tank capacity	75.5 ℓ (20 gal)
--------------------	-----------------

VQ35DE

Fuel tank capacity	75.5 ℓ (20 gal)
--------------------	-----------------
