

SECTION **RAX**
REAR AXLE

A
B
C

RAX

CONTENTS

E

PRECAUTIONS	2	On-vehicle Service	5	F
Precautions	2	REAR WHEEL BEARING	5	
PREPARATION	3	Removal and Installation	6	
Special Service Tools	3	REMOVAL	6	G
Commercial Service Tools	3	INSPECTION AFTER REMOVAL	7	
NOISE, VIBRATION, AND HARSHNESS(NVH)		INSTALLATION	7	
TROUBLESHOOTING	4	SERVICE DATA AND SPECIFICATIONS (SDS)	8	H
NVH Troubleshooting Chart	4	Wheel Bearing (Rear)	8	
WHEEL HUB	5			I

I

J

K

L

M

PRECAUTIONS

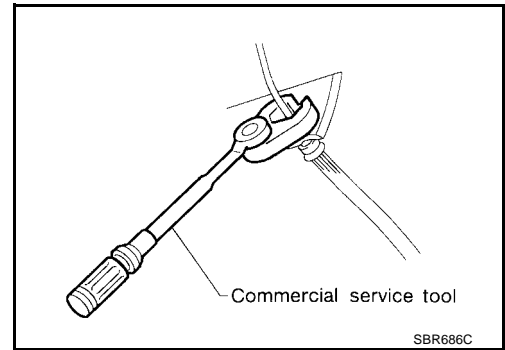
PRECAUTIONS

PFP:00001

Precautions

EDS001DE

- When installing each rubber part, final tightening must be carried out under unladen condition* with tires on ground.
*: Fuel, radiator coolant and engine oil full. Spare tire, jack, hand tools and mats in designated positions.
- Use flare nut wrench when removing or installing brake tubes.
- After installing removed suspension parts, check wheel alignment.
- Do not jack up at the trailing arm and lateral link.
- Always torque brake lines when installing.



PREPARATION

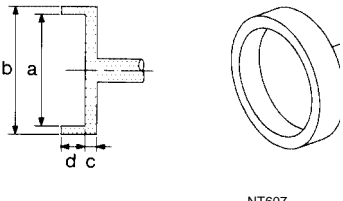
PREPARATION

PFP:00002

Special Service Tools

EDS001DF

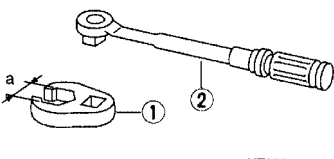
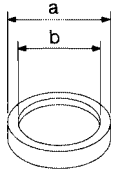
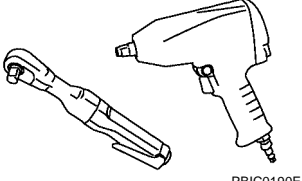
The actual shapes of Kent-Moore tools may differ from those of special service tools illustrated here.

Tool number (Kent-Moore No.) Tool name	Description
ST15310000 (—) Drift	 Install ABS sensor rotor a: 84 mm (3.31 in) dia. b: 96 mm (3.78 in) dia. c: 8 mm (0.31 in) d: 20 mm (0.79 in)

A
B
C
RAX

Commercial Service Tools

EDS001DG

Tool name	Description
GG94310000 1 Flare nut crowfoot 2 Torque wrench	 Removing and installing brake piping a: 10 mm (0.39 in)
Drift	 Install ABS sensor rotor a: 75 mm (2.95 in) dia. b: 62 mm (2.44 in) dia.
Power tool	 Loosening bolts and nuts

E
F
G
H
I
J
K
L
M

NOISE, VIBRATION, AND HARSHNESS(NVH) TROUBLESHOOTING

NOISE, VIBRATION, AND HARSHNESS(NVH) TROUBLESHOOTING

PF0:00003

NVH Troubleshooting Chart

EDS001DH

Use the chart below to help you find the cause of the symptom. If necessary, repair or replace these parts.

Reference page		RAX-6	RAX-6	RAX-5	WT-2, "NVH Troubleshooting Chart"	WT-2, "NVH Troubleshooting Chart"
Possible cause and SUSPECTED PARTS		Improper installation, looseness	Parts interference	Wheel bearing damage	TIRES	ROAD WHEEL
Symptom	REAR AXLE	Noise	x	x	x	x
		Shake	x	x	x	x
		Vibration	x	x	x	x
		Shimmy	x	x	x	x
		Judder	x	x	x	x
		Poor quality ride or handling	x	x	x	x

x: Applicable

WHEEL HUB

PFP:43202

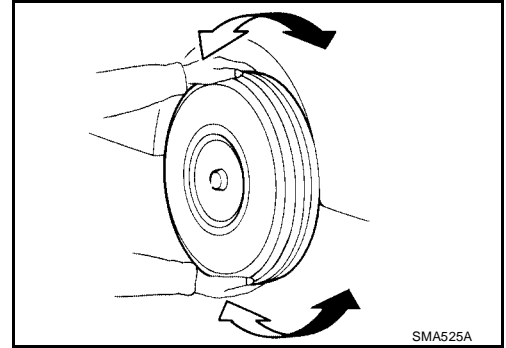
EDS001DI

WHEEL HUB

On-vehicle Service

Check axle and suspension parts for excessive play, wear or damage.

- Shake each rear wheel to check for excessive play.

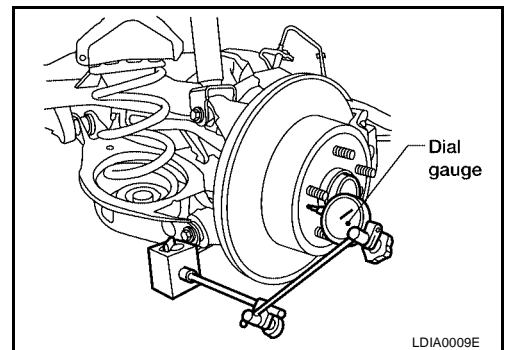


REAR WHEEL BEARING

- Check axial end play.

Axial end play : 0.1 mm (0.0040 in) or less

- Check that wheel hub bearings operate smoothly.
- Replace wheel bearing assembly if there is axial end play or wheel bearing does not turn smoothly. Refer to [RAX-5, "On-vehicle Service"](#).

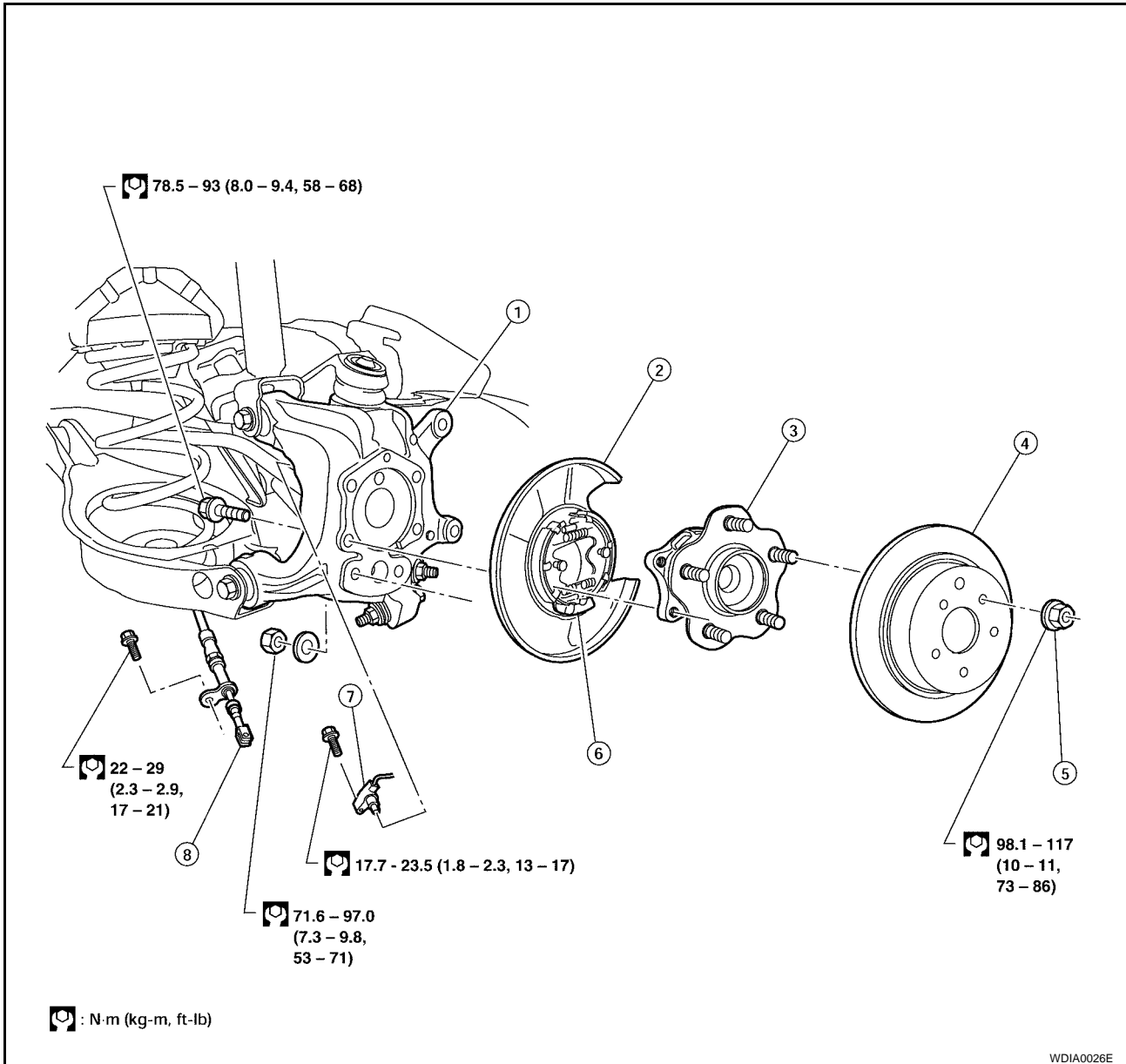


A
B
C
RAX
E
F
G
H
I
J
K
L
M

WHEEL HUB

Removal and Installation

EDS001DJ



- | | | |
|----------------|------------------------|-----------------------|
| 1. Knuckle | 2. Baffle plate | 3. Wheel hub assembly |
| 4. Brake rotor | 5. Wheel nut | 6. Anchor block |
| 7. ABS sensor | 8. Parking brake cable | |

REMOVAL

CAUTION:

Wheel hub assembly does not require maintenance. If any of the following symptoms are noted, replace the wheel hub assembly.

- A growling noise is emitted from the wheel hub assembly while driving.
 - The wheel hub assembly drags or turns roughly.
1. Remove the rear wheel and tire using power tool.
 2. Remove the brake caliper assembly using power tool.
 - The brake hose does not need to be disconnected from the brake caliper.
 - Suspend the brake caliper assembly using wire, do not stretch the brake hose.
 - Do not depress the brake pedal, or the caliper piston will pop out.
 - Do not twist the brake hose.
 3. Remove the brake rotor.

WHEEL HUB

4. Remove the rear ABS sensor, then move it away from the wheel hub assembly.

CAUTION:

Failure to remove the ABS sensor may result in damage to the sensor wires and the sensor being inoperative.

5. Remove the wheel hub assembly from knuckle.

INSPECTION AFTER REMOVAL

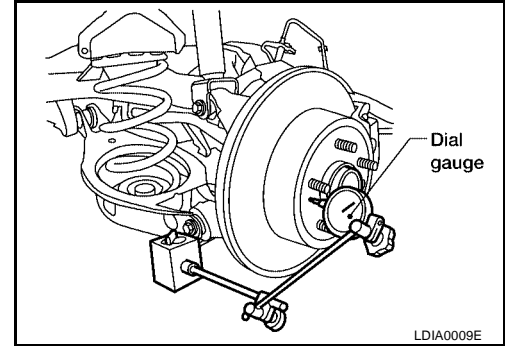
Check for any deformity, cracks, or damage on the wheel hub assembly, replace if necessary.

INSTALLATION

Installation is in the reverse order of removal.

- Check that the wheel bearings operate smoothly.
- Check that the wheel hub bearing axial end play is within specification.

Axial end play : 0.1 mm (0.004 in) or less



A
B
C

RAX

E
F
G
H
I
J
K
L
M

SERVICE DATA AND SPECIFICATIONS (SDS)

SERVICE DATA AND SPECIFICATIONS (SDS)

PF0:00030

Wheel Bearing (Rear)

EDS001DK

Wheel bearing axial end play	0.1 mm (0.0040 in) or less
------------------------------	----------------------------
