

SECTION IP
INSTRUMENT PANEL

A
 B
 C
 D
 E
 F
 G
 H
 IP
 J
 K
 L
 M

CONTENTS

<p>PRECAUTIONS 2 Precautions for Supplemental Restraint System (SRS) "AIR BAG" and "SEAT BELT PRE-TENSIONER" 2 PREPARATION 3 Special Service Tools 3 Commercial Service Tools 3 SQUEAK AND RATTLE TROUBLE DIAGNOSIS 4 Work Flow 4 CUSTOMER INTERVIEW 4 DUPLICATE THE NOISE AND TEST DRIVE 5 CHECK RELATED SERVICE BULLETINS 5 LOCATE THE NOISE AND IDENTIFY THE ROOT CAUSE 5 REPAIR THE CAUSE 5 CONFIRM THE REPAIR 6 Generic Squeak and Rattle Troubleshooting 6 INSTRUMENT PANEL 6 CENTER CONSOLE 6 DOORS 6 TRUNK 7 SUNROOF/HEADLINING 7 OVERHEAD CONSOLE (FRONT AND REAR)..... 7 SEATS 7 UNDERHOOD 7 Diagnostic Worksheet 8 INSTRUMENT PANEL ASSEMBLY 10 Instrument Panel 10 REMOVAL 11 INSTALLATION 11 Cluster Lid A 12</p>	<p>Cluster Lid C 12 REMOVAL 12 INSTALLATION 12 Cluster Lid D 12 REMOVAL 12 INSTALLATION 13 Center Stack Assembly 13 WITH NAVI 13 WITHOUT NAVI 14 DISASSEMBLY AND ASSEMBLY 14 Lower Driver Instrument Panel 15 REMOVAL 15 INSTALLATION 15 Glove Box Assembly and Housing 15 REMOVAL AND INSTALLATION 15 DISASSEMBLY AND ASSEMBLY 16 CENTER CONSOLE ASSEMBLY 17 Front Center Console 17 REMOVAL 17 INSTALLATION 17 Disassembly and Assembly 17 DISASSEMBLY 18 ASSEMBLY 18 CVT Finisher 18 REMOVAL 18 INSTALLATION 18 Rear Center Console 18 REMOVAL AND INSTALLATION 18 Rear Center Console 19 DISASSEMBLY AND ASSEMBLY 19</p>
---	--

PRECAUTIONS

PRECAUTIONS

PFP:00001

Precautions for Supplemental Restraint System (SRS) “AIR BAG” and “SEAT BELT PRE-TENSIONER”

EIS003WR

The Supplemental Restraint System such as “AIR BAG” and “SEAT BELT PRE-TENSIONER”, used along with a front seat belt, helps to reduce the risk or severity of injury to the driver and front passenger for certain types of collision. This system includes seat belt switch inputs and dual stage front air bag modules. The SRS system uses the seat belt switches to determine the front air bag deployment, and may only deploy one front air bag, depending on the severity of a collision and whether the front occupants are belted or unbelted. Information necessary to service the system safely is included in the SRS and SB section of this Service Manual.

WARNING:

- To avoid rendering the SRS inoperative, which could increase the risk of personal injury or death in the event of a collision which would result in air bag inflation, all maintenance must be performed by an authorized NISSAN/INFINITI dealer.
- Improper maintenance, including incorrect removal and installation of the SRS, can lead to personal injury caused by unintentional activation of the system. For removal of Spiral Cable and Air Bag Module, see the SRS section.
- Do not use electrical test equipment on any circuit related to the SRS unless instructed to in this Service Manual. SRS wiring harnesses can be identified by yellow and/or orange harnesses or harness connectors.

PREPARATION

PREPARATION

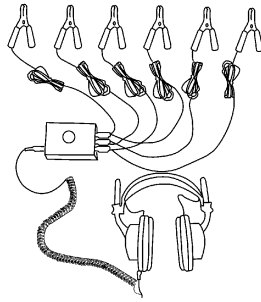
PFP:00002

Special Service Tools

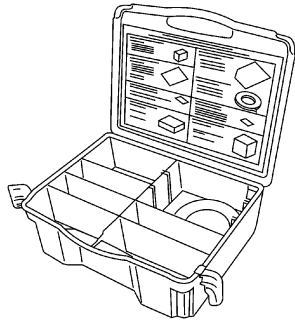
EIS003WS

The actual shapes of Kent-Moore tools may differ from those of special service tools illustrated here.

Tool number (Kent-Moore No.) Tool name	Description
— (J-39570) Chassis ear	Locating the noise
— (J-43980) NISSAN Squeak and Rattle kit	Repairing the cause of noise



SBT839

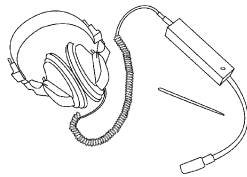


SBT840

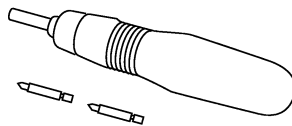
Commercial Service Tools

EIS003WT

(Kent-Moore No.) Tool name	Description
(J-39565) Engine ear	Locating the noise
Power Tool	Loosening bolts and nuts



SIIA0995E



PBIC0191E

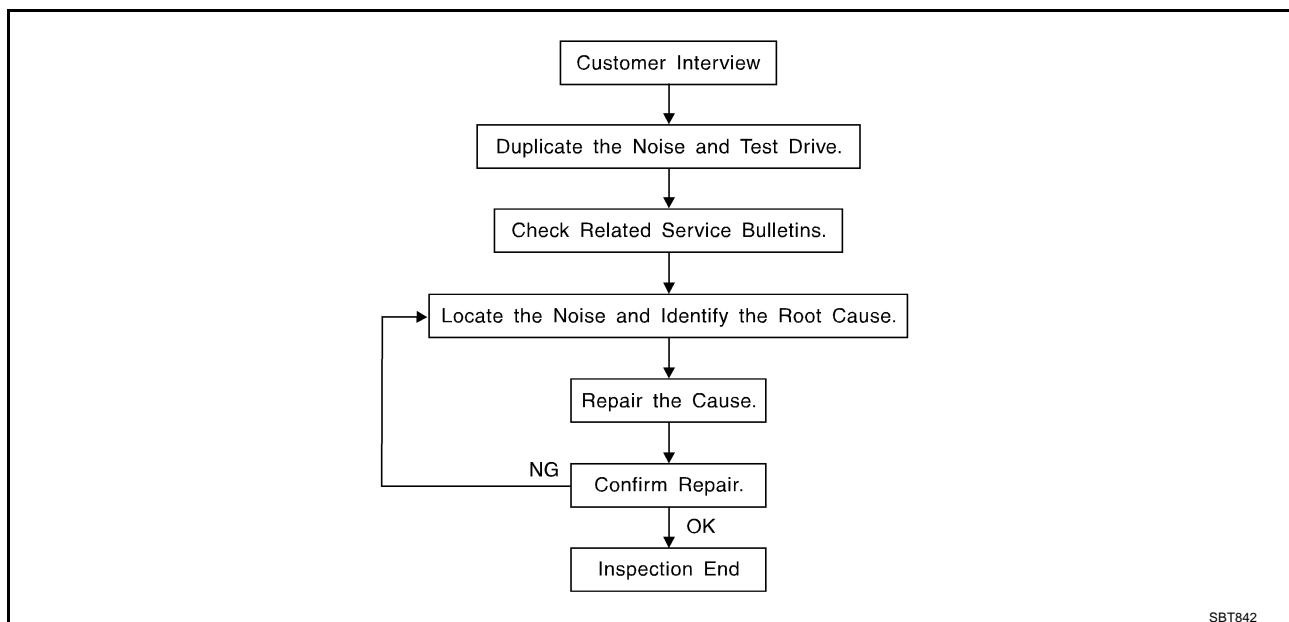
SQUEAK AND RATTLE TROUBLE DIAGNOSIS

SQUEAK AND RATTLE TROUBLE DIAGNOSIS

PF0:0000

Work Flow

EIS003WU



CUSTOMER INTERVIEW

Interview the customer, if possible, to determine the conditions that exist when the noise occurs. Use the Diagnostic Worksheet during the interview to document the facts and conditions when the noise occurs and any customer's comments; refer to [IP-8, "Diagnostic Worksheet"](#). This information is necessary to duplicate the conditions that exist when the noise occurs.

- The customer may not be able to provide a detailed description or the location of the noise. Attempt to obtain all the facts and conditions that exist when the noise occurs (or does not occur).
- If there is more than one noise in the vehicle, be sure to diagnose and repair the noise that the customer is concerned about. This can be accomplished by test driving the vehicle with the customer.
- After identifying the type of noise, isolate the noise in terms of its characteristics. The noise characteristics are provided so the customer, service adviser and technician are all speaking the same language when defining the noise.
- Squeak — (Like tennis shoes on a clean floor)
Squeak characteristics include the light contact/fast movement/brought on by road conditions/hard surfaces = higher pitch noise/softer surfaces = lower pitch noises/edge to surface = chirping.
- Creak — (Like walking on an old wooden floor)
Creak characteristics include firm contact/slow movement/twisting with a rotational movement/pitch dependent on materials/often brought on by activity.
- Rattle — (Like shaking a baby rattle)
Rattle characteristics include the fast repeated contact/vibration or similar movement/loose parts/missing clip or fastener/incorrect clearance.
- Knock — (Like a knock on a door)
Knock characteristics include hollow sounding/sometimes repeating/often brought on by driver action.
- Tick — (Like a clock second hand)
Tick characteristics include gentle contacting of light materials/loose components/can be caused by driver action or road conditions.
- Thump — (Heavy, muffled knock noise)
Thump characteristics include softer knock/dead sound often brought on by activity.
- Buzz — (Like a bumblebee)
Buzz characteristics include high frequency rattle/firm contact.
- Often the degree of acceptable noise level will vary depending upon the person. A noise that you may judge as acceptable may be very irritating to the customer.
- Weather conditions, especially humidity and temperature, may have a great effect on noise level.

SQUEAK AND RATTLE TROUBLE DIAGNOSIS

DUPLICATE THE NOISE AND TEST DRIVE

If possible, drive the vehicle with the customer until the noise is duplicated. Note any additional information on the Diagnostic Worksheet regarding the conditions or location of the noise. This information can be used to duplicate the same conditions when you confirm the repair.

If the noise can be duplicated easily during the test drive, to help identify the source of the noise, try to duplicate the noise with the vehicle stopped by doing one or all of the following:

1. Close a door.
 2. Tap or push/pull around the area where the noise appears to be coming from.
 3. Rev the engine.
 4. Use a floor jack to recreate vehicle "twist".
 5. At idle, apply engine load (electrical load, half-clutch on M/T model, drive position on A/T model).
 6. Raise the vehicle on a hoist and hit a tire with a rubber hammer.
- Drive the vehicle and attempt to duplicate the conditions the customer states exist when the noise occurs.
 - If it is difficult to duplicate the noise, drive the vehicle slowly on an undulating or rough road to stress the vehicle body.

CHECK RELATED SERVICE BULLETINS

After verifying the customer concern or symptom, check ASIST for Technical Service Bulletins (TSBs) related to that concern or symptom.

If a TSB relates to the symptom, follow the procedure to repair the noise.

LOCATE THE NOISE AND IDENTIFY THE ROOT CAUSE

1. Narrow down the noise to a general area. To help pinpoint the source of the noise, use a listening tool (Chassis Ear: J-39570, Engine Ear: J-39565 and mechanics stethoscope).
2. Narrow down the noise to a more specific area and identify the cause of the noise by:
 - Removing the components in the area that you suspect the noise is coming from.
Do not use too much force when removing clips and fasteners, otherwise clips and fasteners can be broken or lost during the repair, resulting in the creation of new noise.
 - Tapping or pushing/pulling the component that you suspect is causing the noise.
Do not tap or push/pull the component with excessive force, otherwise the noise will be eliminated only temporarily.
 - Feeling for a vibration with your hand by touching the component(s) that you suspect is (are) causing the noise.
 - Placing a piece of paper between components that you suspect are causing the noise.
 - Looking for loose components and contact marks.

Refer to [IP-6, "Generic Squeak and Rattle Troubleshooting"](#).

REPAIR THE CAUSE

- If the cause is a loose component, tighten the component securely.
- If the cause is insufficient clearance between components:
 - Separate components by repositioning or loosening and retightening the component, if possible.
 - Insulate components with a suitable insulator such as urethane pads, foam blocks, felt cloth tape or urethane tape. A NISSAN Squeak and Rattle Kit (J-43980) is available through your authorized NISSAN Parts Department.

CAUTION:

Do not use excessive force as many components are constructed of plastic and may be damaged.

Always check with the Parts Department for the latest parts information.

The following materials are contained in the NISSAN Squeak and Rattle Kit (J-43980). Each item can be ordered separately as needed.

URETHANE PADS [1.5 mm (0.059 in) thick]

Insulates connectors, harness, etc.

76268-9E005: 100 x 135 mm (3.94 x 5.31 in)/76884-71L01: 60 x 85 mm (2.36 x 3.35 in)/76884-71L02: 15 x 25 mm (0.59 x 0.98 in)

INSULATOR (Foam blocks)

Insulates components from contact. Can be used to fill space behind a panel.

SQUEAK AND RATTLE TROUBLE DIAGNOSIS

73982-9E000: 45 mm (1.77 in) thick, 50 x 50 mm (1.97 x 1.97 in)/73982-50Y00: 10 mm (0.39 in) thick, 50 x 50 mm (1.97 x 1.97 in)

INSULATOR (Light foam block)

80845-71L00: 30 mm (1.18 in) thick, 30 x 50 mm (1.18 x 1.97 in)

FELT CLOTH TAPE

Used to insulate where movement does not occur. Ideal for instrument panel applications.

68370-4B000: 15 x 25 mm (0.59 x 0.98 in) pad/68239-13E00: 5 mm (0.20 in) wide tape roll

The following materials, not found in the kit, can also be used to repair squeaks and rattles.

UHMW (TEFLON) TAPE

Insulates where slight movement is present. Ideal for instrument panel applications.

SILICONE GREASE

Used in place of UHMW tape that will be visible or not fit.

Note: Will only last a few months.

SILICONE SPRAY

Use when grease cannot be applied.

DUCT TAPE

Use to eliminate movement.

CONFIRM THE REPAIR

Confirm that the cause of a noise is repaired by test driving the vehicle. Operate the vehicle under the same conditions as when the noise originally occurred. Refer to the notes on the Diagnostic Worksheet.

Generic Squeak and Rattle Troubleshooting

EIS0048H

Refer to Table of Contents for specific component removal and installation information.

INSTRUMENT PANEL

Most incidents are caused by contact and movement between:

1. The cluster lid A and instrument panel
2. Acrylic lens and combination meter housing
3. Instrument panel to front pillar garnish
4. Instrument panel to windshield
5. Instrument panel mounting pins
6. Wiring harnesses behind the combination meter
7. A/C defroster duct and duct joint

These incidents can usually be located by tapping or moving the components to duplicate the noise or by pressing on the components while driving to stop the noise. Most of these incidents can be repaired by applying felt cloth tape or silicone spray (in hard to reach areas). Urethane pads can be used to insulate wiring harness.

CAUTION:

Do not use silicone spray to isolate a squeak or rattle. If you saturate the area with silicone, you will not be able to recheck the repair.

CENTER CONSOLE

Components to pay attention to include:

1. Shifter assembly cover to finisher
2. A/C control unit and cluster lid C
3. Wiring harnesses behind audio and A/C control unit

The instrument panel repair and isolation procedures also apply to the center console.

DOORS

Pay attention to the:

1. Finisher and inner panel making a slapping noise
2. Inside handle escutcheon to door finisher
3. Wiring harnesses tapping
4. Door striker out of alignment causing a popping noise on starts and stops

SQUEAK AND RATTLE TROUBLE DIAGNOSIS

Tapping or moving the components or pressing on them while driving to duplicate the conditions can isolate many of these incidents. You can usually insulate the areas with felt cloth tape or insulator foam blocks from the NISSAN Squeak and Rattle Kit (J-43980) to repair the noise.

A

TRUNK

Trunk noises are often caused by a loose jack or loose items put into the trunk by the owner. In addition look for:

B

1. Trunk lid bumpers out of adjustment
2. Trunk lid striker out of adjustment
3. The trunk lid torsion bars knocking together
4. A loose license plate or bracket

C

Most of these incidents can be repaired by adjusting, securing or insulating the item(s) or component(s) causing the noise.

D

SUNROOF/HEADLINING

Noises in the sunroof/headlining area can often be traced to one of the following:

1. Sunroof lid, rail, linkage or seals making a rattle or light knocking noise
2. Sun visor shaft shaking in the holder
3. Front or rear windshield touching headliner and squeaking

E

Again, pressing on the components to stop the noise while duplicating the conditions can isolate most of these incidents. Repairs usually consist of insulating with felt cloth tape.

F

G

OVERHEAD CONSOLE (FRONT AND REAR)

Overhead console noises are often caused by the console panel clips not being engaged correctly. Most of these incidents are repaired by pushing up on the console at the clip locations until the clips engage.

H

In addition look for:

1. Loose harness or harness connectors.
2. Front console map/reading lamp lens loose.
3. Loose screws at console attachment points.

IP

SEATS

When isolating seat noise it's important to note the position the seat is in and the load placed on the seat when the noise is present. These conditions should be duplicated when verifying and isolating the cause of the noise.

J

Cause of seat noise include:

1. Headrest rods and holder
2. A squeak between the seat pad cushion and frame
3. The rear seatback lock and bracket

K

These noises can be isolated by moving or pressing on the suspected components while duplicating the conditions under which the noise occurs. Most of these incidents can be repaired by repositioning the component or applying urethane tape to the contact area.

L

M

UNDERHOOD

Some interior noise may be caused by components under the hood or on the engine wall. The noise is then transmitted into the passenger compartment.

Causes of transmitted underhood noise include:

1. Any component mounted to the engine wall
2. Components that pass through the engine wall
3. Engine wall mounts and connectors
4. Loose radiator mounting pins
5. Hood bumpers out of adjustment
6. Hood striker out of adjustment

These noises can be difficult to isolate since they cannot be reached from the interior of the vehicle. The best method is to secure, move or insulate one component at a time and test drive the vehicle. Also, engine RPM or load can be changed to isolate the noise. Repairs can usually be made by moving, adjusting, securing, or insulating the component causing the noise.

SQUEAK AND RATTLE TROUBLE DIAGNOSIS

Diagnostic Worksheet

EIS003WW

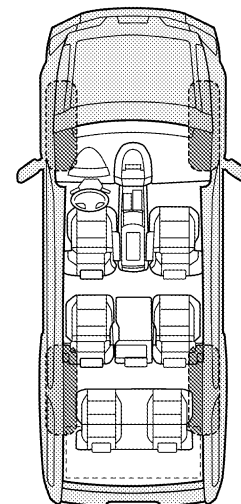
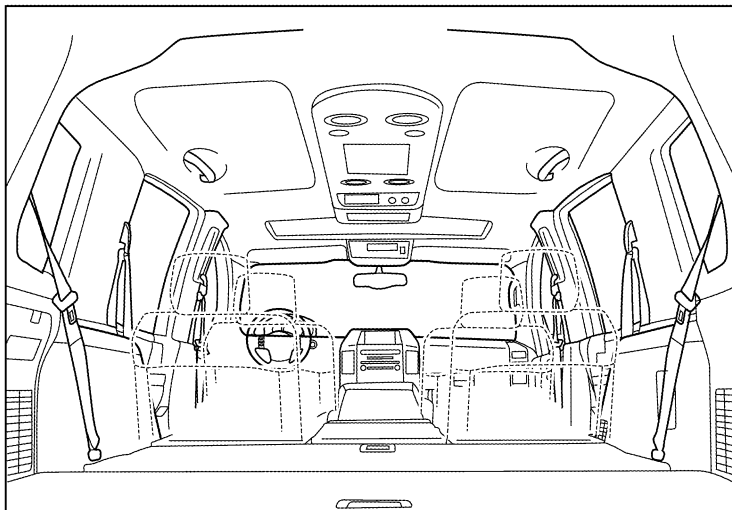
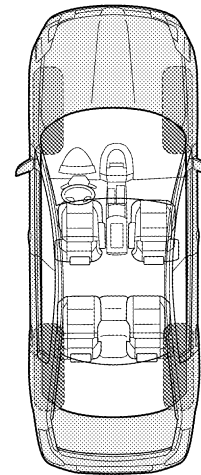
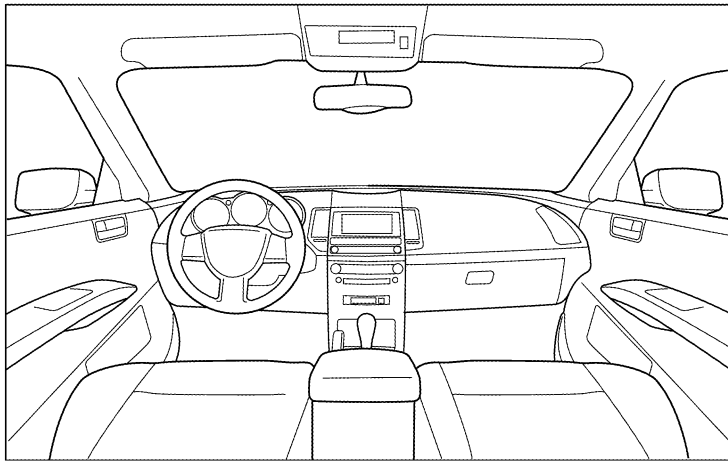
Dear Customer:

We are concerned about your satisfaction with your vehicle. Repairing a squeak or rattle sometimes can be very difficult. To help us fix your vehicle right the first time, please take a moment to note the area of the vehicle where the squeak or rattle occurs and under what conditions. You may be asked to take a test drive with a service advisor or technician to ensure we confirm the noise you are hearing.

SQUEAK & RATTLE DIAGNOSTIC WORKSHEET

I. WHERE DOES THE NOISE COME FROM? (circle the area of the vehicle)

The illustrations are for reference only, and may not reflect the actual configuration of your vehicle.



Continue to page 2 of the worksheet and briefly describe the location of the noise or rattle. In addition, please indicate the conditions which are present when the noise occurs.

SQUEAK AND RATTLE TROUBLE DIAGNOSIS

SQUEAK & RATTLE DIAGNOSTIC WORKSHEET - page 2

Briefly describe the location where the noise occurs:

II. WHEN DOES IT OCCUR? (please check the boxes that apply)

- | | |
|---|--|
| <input type="checkbox"/> Anytime | <input type="checkbox"/> After sitting out in the rain |
| <input type="checkbox"/> 1st time in the morning | <input type="checkbox"/> When it is raining or wet |
| <input type="checkbox"/> Only when it is cold outside | <input type="checkbox"/> Dry or dusty conditions |
| <input type="checkbox"/> Only when it is hot outside | <input type="checkbox"/> Other: |

III. WHEN DRIVING:

- Through driveways
- Over rough roads
- Over speed bumps
- Only about ____ mph
- On acceleration
- Coming to a stop
- On turns: left, right or either (circle)
- With passengers or cargo
- Other: _____
- After driving ____ miles or ____ minutes

IV. WHAT TYPE OF NOISE

- Squeak (like tennis shoes on a clean floor)
- Creak (like walking on an old wooden floor)
- Rattle (like shaking a baby rattle)
- Knock (like a knock at the door)
- Tick (like a clock second hand)
- Thump (heavy muffled knock noise)
- Buzz (like a bumble bee)

TO BE COMPLETED BY DEALERSHIP PERSONNEL

Test Drive Notes:

	YES	NO	Initials of person performing
Vehicle test driven with customer	<input type="checkbox"/>	<input type="checkbox"/>	_____
- Noise verified on test drive	<input type="checkbox"/>	<input type="checkbox"/>	_____
- Noise source located and repaired	<input type="checkbox"/>	<input type="checkbox"/>	_____
- Follow up test drive performed to confirm repair	<input type="checkbox"/>	<input type="checkbox"/>	_____

VIN: _____ Customer Name _____

W.O.# _____ Date: _____

This form must be attached to Work Order

LAI0071E

INSTRUMENT PANEL ASSEMBLY

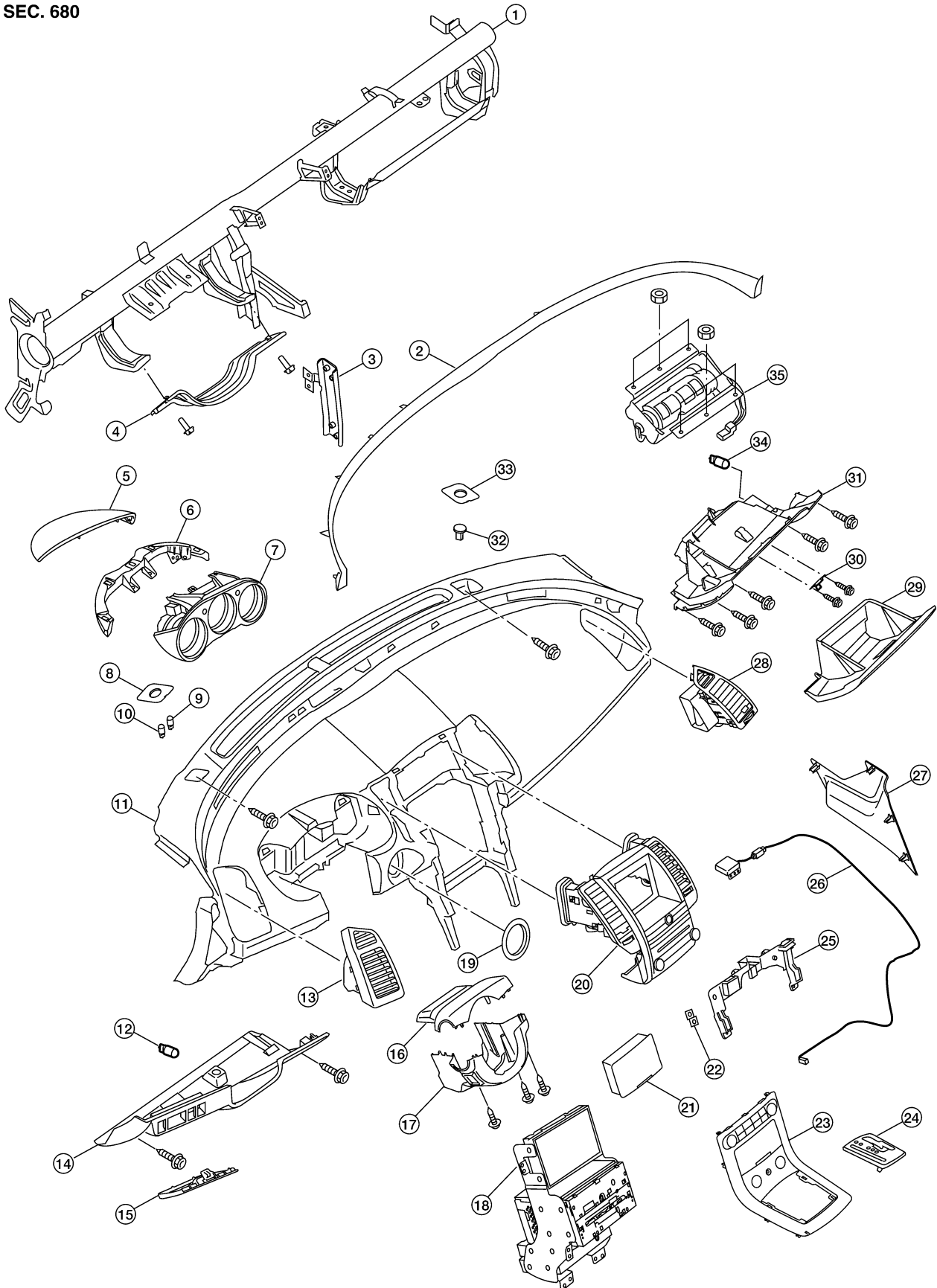
INSTRUMENT PANEL ASSEMBLY

PF6:68200

Instrument Panel

EIS007N8

SEC. 680



WIIA1227E

INSTRUMENT PANEL ASSEMBLY

- | | | | |
|----------------------------------|------------------------------------|--|---|
| 1. Steering member assembly | 2. Instrument panel finisher | 3. Instrument stay, driver | A |
| 4. Lower knee protector, LH | 5. Cluster lid A | 6. Cluster lid A bracket | |
| 7. Combination meter assembly | 8. Instrument mask LH | 9. Security light | |
| 10. Optical sensor | 11. Instrument panel | 12. Lower driver instrument panel bulb | B |
| 13. Side ventilator assembly, LH | 14. Lower driver instrument panel | 15. Fuse block cover | |
| 16. Steering column cover, upper | 17. Steering column cover, lower | 18. Center stack | |
| 19. Steering lock escutcheon | 20. Cluster lid D | 21. Cluster lid C bin | C |
| 22. Audio reinforcement bracket | 23. Cluster lid C | 24. CVT finisher | |
| 25. Cluster lid D bracket | 26. GPS antenna assembly | 27. Instrument lower cover, RH | |
| 28. Side ventilator assembly, RH | 29. Glove box assembly | 30. Glove box striker | D |
| 31. Glove box housing | 32. Sun load sensor | 33. Instrument mask RH | |
| 34. Glove box bulb | 35. Front passenger air bag module | | |

REMOVAL

1. Disconnect battery negative terminal.
2. Disconnect battery positive terminal.
3. Remove cluster lid A. Refer to [IP-12, "Cluster Lid A"](#) .
4. Separate the combination meter from the instrument panel and disconnect the harness to remove.
5. Remove the front center console. Refer to [IP-17, "Front Center Console"](#) .
6. Remove center stack assembly. Refer to [IP-13, "Center Stack Assembly"](#) .
7. Remove and disconnect instrument mask RH, optical sensor.
8. Remove and disconnect instrument mask LH, sun sensor and security sensor.
9. Partially remove and place the front door welts aside.
10. Remove front pillar garnishes. Refer to [EI-34, "BODY SIDE TRIM"](#) .
11. Remove front kicking plates. Refer to [EI-34, "BODY SIDE TRIM"](#) .
12. Remove lower dash side trim panels. Refer to [EI-34, "BODY SIDE TRIM"](#) .
13. Remove passenger air bag to steering member assembly bolt.
14. Disconnect passenger side air bag electrical connector.
15. Remove the steering lock escutcheon.
16. Remove the steering column. Refer to [PS-14, "STEERING COLUMN"](#) .

CAUTION:

- The rotation of the spiral cable (SRS air bag component part) is limited. If the steering gear must be removed, set the front wheels in the straight-ahead direction. Do not rotate the steering column while the steering gear is removed.
- Remove the steering wheel before disconnecting the coupling joint to avoid damaging the spiral cable.

17. Remove the ignition push knob.
18. Remove instrument panel.
19. Remove the main defroster duct.
20. Disconnect the GPS antenna.
21. Remove the GPS antenna.
22. Remove the instrument panel finisher.

INSTALLATION

Installation is in the reverse order of removal.

CAUTION:

When installing the steering column, finger-tighten all of the lower bracket and joint retaining bolts; then tighten them to specification. Do not apply undue stress to the steering column.

INSTRUMENT PANEL ASSEMBLY

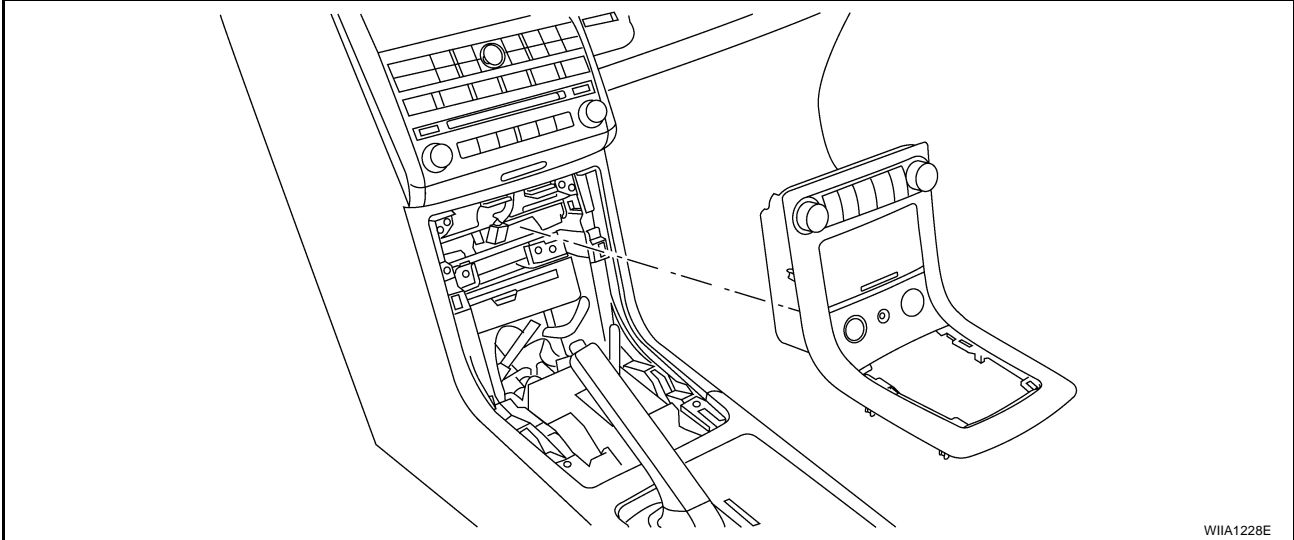
Cluster Lid A

EIS009BF

1. Disconnect battery negative terminal.
2. Disconnect battery positive terminal.
3. Pull up to release clips and remove cluster lid A.

Cluster Lid C REMOVAL

EIS007N9



WIIA1228E

CAUTION:

When removing and installing, place shop cloths onto surrounding parts to protect A/T or M/T finisher and center console from damage.

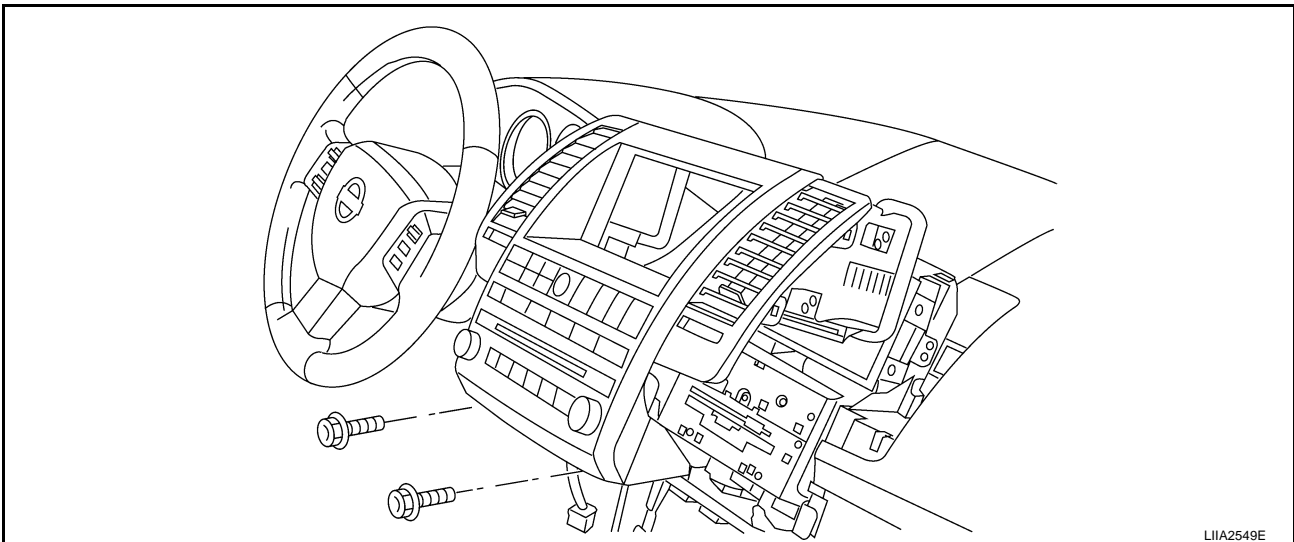
1. Disconnect battery negative terminal.
2. Remove the CVT finisher. Refer to [IP-18, "CVT Finisher"](#).
3. Pull up on the rear portion of cluster lid C, once the 4 bottom clips are disengaged, pull rearward to release molded clips at the top of cluster lid C.
4. Disconnect the electrical connectors.
5. Remove front air control, storage bin, hazard switch, aux in jack, and power outlet.

INSTALLATION

Installation is in the reverse order of removal.

Cluster Lid D REMOVAL

EIS007NA



LIA2549E

1. Remove cluster lid C. Refer to [IP-12, "Cluster Lid C"](#).

INSTRUMENT PANEL ASSEMBLY

2. Remove cluster lid D screws using power tool.
3. Pull cluster lid D toward rear of vehicle to release clips.
4. Disconnect the electrical connectors.
5. Remove the audio switch (if equipped) and the center vent ducts.

INSTALLATION

Installation is in the reverse order of removal.

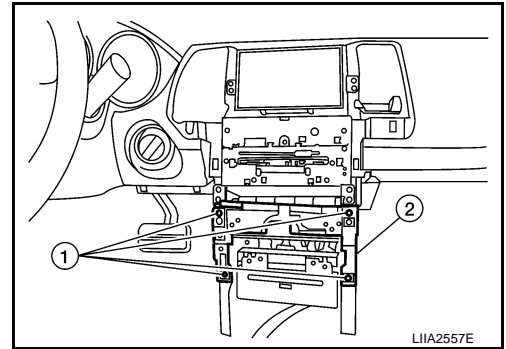
Center Stack Assembly WITH NAVI

EIS007NB

Removal

CAUTION:

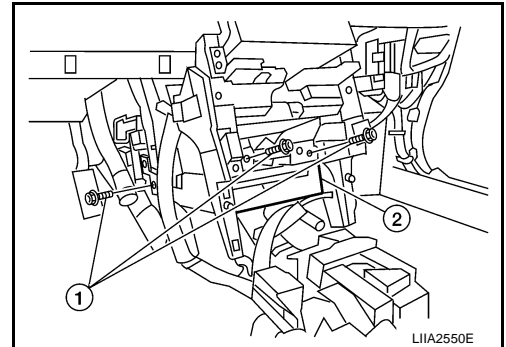
- To avoid damage, eject map DVD-ROM disk before removing the NAVI control unit.
 - Cover NAVI control unit with a cloth and avoid contact of NAVI control unit with brackets that may cause scratches or damage to NAVI control unit.
1. Remove the front center console. Refer to [IP-17, "Front Center Console"](#) .
 2. Position driver side carpet flap aside.
 3. Remove cluster lid D. Refer to [IP-12, "Cluster Lid D"](#) .
 4. Remove cluster lid D bracket.



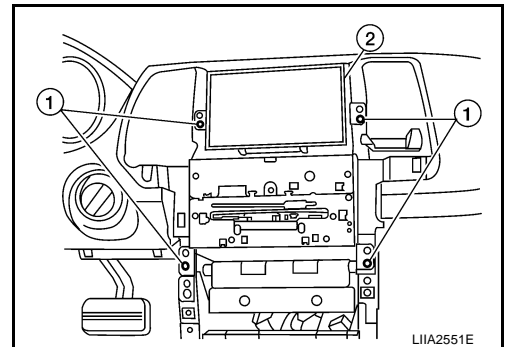
5. Remove the bolts (1), disconnect the electrical connector and remove the NAVI control unit (2).

NOTE:

NAVI control unit only on vehicles with navigation system.



6. Remove the screws (1), disconnect electrical connectors and remove the center stack (2).



Installation

Installation is in the reverse order of removal.

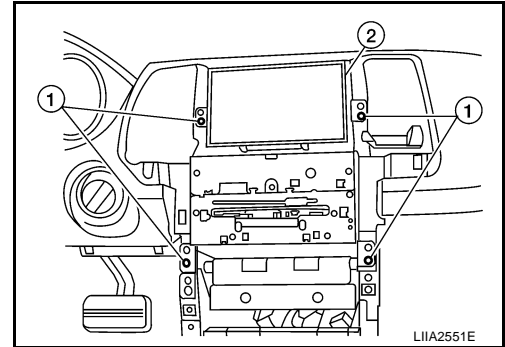
INSTRUMENT PANEL ASSEMBLY

WITHOUT NAVI

Removal

CAUTION:

- To avoid damage, eject any audio disks before removing the center stack assembly.
 - Cover audio display and head unit with a cloth and avoid contact with brackets that may cause scratches or damage to the audio display or head unit.
1. Remove cluster lid D. Refer to [IP-12, "Cluster Lid D"](#).
 2. Remove the screws (1), disconnect electrical connectors and remove the center stack (2).



Installation

Installation is in the reverse order of removal.

DISASSEMBLY AND ASSEMBLY

Disassembly

CAUTION:

Keep track of appropriate screws used for each component, the screws for audio unit are different from those used for unified meter and A/C amp.

1. Remove the display unit(s) screws using power tool and remove the display unit(s) from the brackets.
CAUTION:
Cover the display unit(s) with a cloth and avoid contact with brackets that may cause scratches or damage to the display unit(s).
2. Remove unified meter and A/C amp. screws using power tool and remove unified meter and A/C amp. Refer to [DI-34, "Unified Meter and A/C Amp."](#)
3. Remove automatic drive positioner control unit screws using power tool and remove automatic drive positioner control unit from brackets.
4. Remove display control unit screws using power tool and remove the display control unit from brackets.
NOTE:
Display control unit only on vehicles with navigation system.
5. Remove audio unit screws using power tool and remove audio unit from brackets.

Assembly

CAUTION:

- Use appropriate screws for each component, the screws for audio unit are different from those used for unified meter and A/C amp.

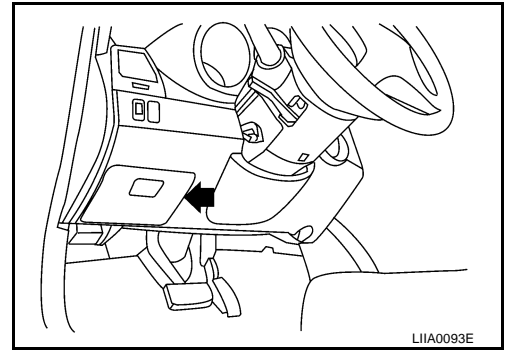
Assembly is in the reverse order of disassembly

INSTRUMENT PANEL ASSEMBLY

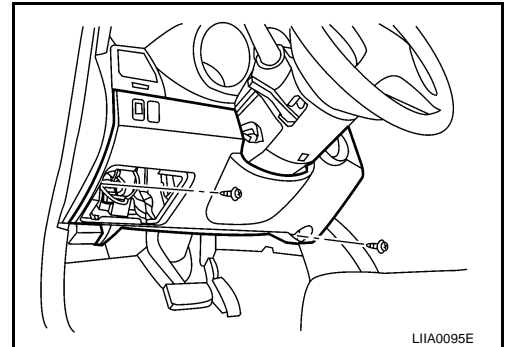
Lower Driver Instrument Panel REMOVAL

EIS007NC

1. Remove fuse block cover.



2. Remove lower driver instrument panel screws using power tool.
3. Remove lower driver instrument panel.
4. Disconnect aspirator tube and in vehicle temperature sensor.
5. Disconnect the foot well lamp socket from the lower driver instrument panel.
6. Disconnect electrical harness connectors.

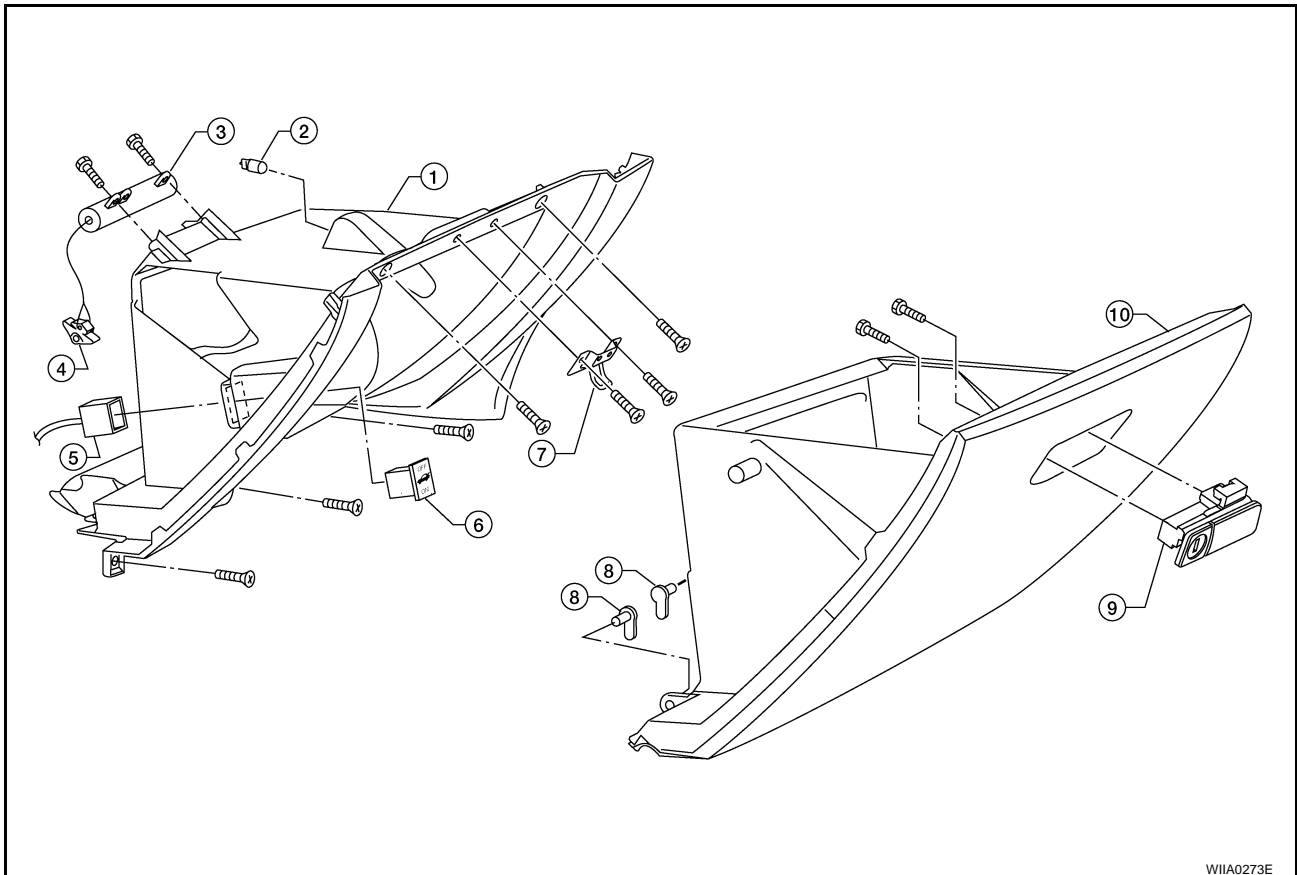


INSTALLATION

Installation is in the reverse order of removal.

Glove Box Assembly and Housing REMOVAL AND INSTALLATION

EIS007NF



INSTRUMENT PANEL ASSEMBLY

- | | | |
|----------------------|--------------------------------|------------------------|
| 1. Glove box housing | 2. Glove box lamp | 3. Glove box damper |
| 4. Damper clip | 5. Trunk cancel switch harness | 6. Trunk cancel switch |
| 7. Glove box striker | 8. Glove box pin | 9. Glove box latch |
| 10. Glove box door | | |

Removal

1. Remove glove box pins and remove glove box door.
2. Remove the glove box striker screws using power tool.
3. Remove glove box housing screws using power tool.
4. Disconnect trunk cancel switch harness.
5. Disconnect the glove box and foot well lamps from the glove box housing.
6. Remove the glove box housing.

Installation

Installation is in the reverse order of removal.

DISASSEMBLY AND ASSEMBLY

Disassembly

1. Remove glove box latch screws using power tool and remove glove box latch.
2. Remove trunk cancel switch.
3. Remove glove box striker.
4. Remove damper clip and remove glove box damper.

Assembly

Assembly is in the reverse order of disassembly.

CENTER CONSOLE ASSEMBLY

PFP:96910

CENTER CONSOLE ASSEMBLY

Front Center Console REMOVAL

EIS007N6

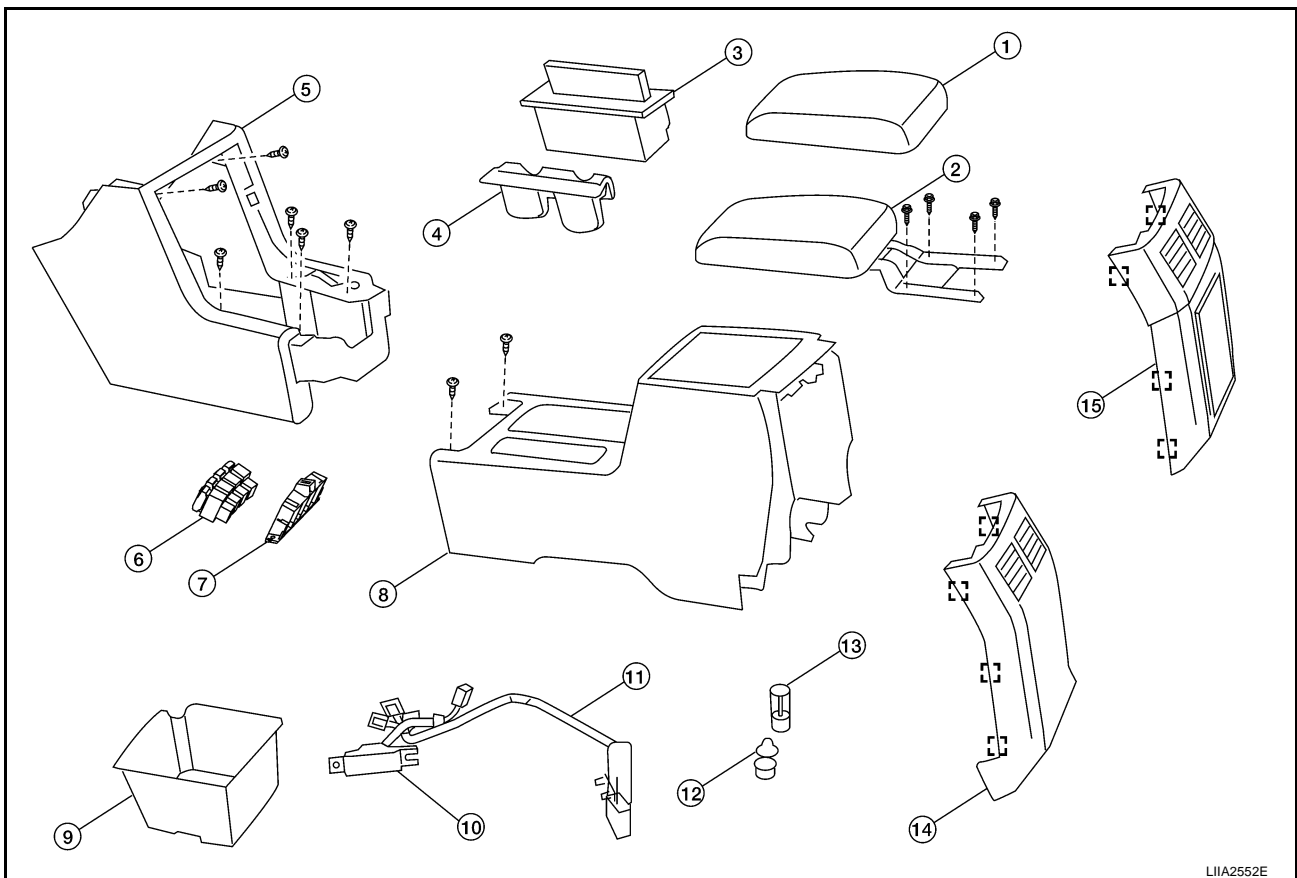
1. Disconnect battery negative terminal.
2. On four seat models, remove the rear center console. Refer to [IP-18, "REMOVAL AND INSTALLATION"](#).
3. On five seat models, remove the rear finisher assembly.
4. Remove glove box housing. Refer to [IP-15, "Glove Box Assembly and Housing"](#).
5. Remove lower driver instrument panel. Refer to [IP-15, "Lower Driver Instrument Panel"](#).
6. Remove instrument lower cover, RH.
7. Remove cluster lid C. Refer to [IP-12, "Cluster Lid C"](#).
8. Temporarily reconnect the battery negative terminal.
9. Move front seats forward and remove the screws.
10. Lift up and rotate the center console assembly rear.
11. Disconnect harnesses and remove the front center console rear.
12. Remove the screws, then pull the center console front rearward and to the passenger side to remove.

INSTALLATION

Installation is in the reverse order of removal.

Disassembly and Assembly

EIS007X3



- | | | |
|--------------------------------|--|--|
| 1. Console lid | 2. Arm rest/ console lid assembly | 3. Cup holder housing |
| 4. Cup holder insert | 5. Center console assembly front | 6. Switch housing |
| 7. Switches | 8. Center console assembly rear | 9. Storage bin tray |
| 10. I-Key antenna | 11. Front center console wiring harness | 12. Power socket ring (cover) |
| 13. Power socket base assembly | 14. Rear finisher assembly 5 seat models | 15. Rear finisher assembly 4 seat models |

CENTER CONSOLE ASSEMBLY

DISASSEMBLY

1. Remove front center console. Refer to [IP-17, "REMOVAL"](#) .
2. Remove cup holder insert from cup holder assembly.
3. Remove console rear pocket.
4. Remove the power point assembly.
5. Remove screws from hinge plate and remove console lid assembly.

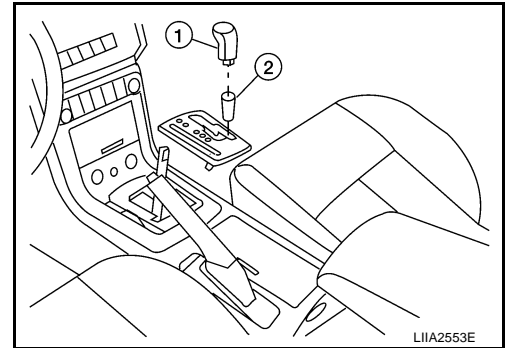
ASSEMBLY

Assembly is in the reverse order of disassembly.

CVT Finisher REMOVAL

EIS007NG

1. Place the shift lever in the Drive position.
2. Separate the chrome finisher from the shift knob by pushing it down.
3. Remove the shift knob (1) by removing the spring clip and pulling up. Then remove the chrome finisher (2).
4. Set the parking brake.
5. Pull up to release the clips and remove CVT finisher.
6. Disconnect the bulb housing from the assembly.



INSTALLATION

Installation is in the reverse order of removal.

Rear Center Console REMOVAL AND INSTALLATION

EIS007N7

Removal

1. Remove both rear seat cushions and both rear seatbacks. Refer to [SE-102, "REAR SEAT"](#) .
2. Remove screws and pass through assembly.
3. Release clips and remove lower side cover RH and lower side cover LH. .
4. Remove screws, disconnect harness and remove rear console assembly.

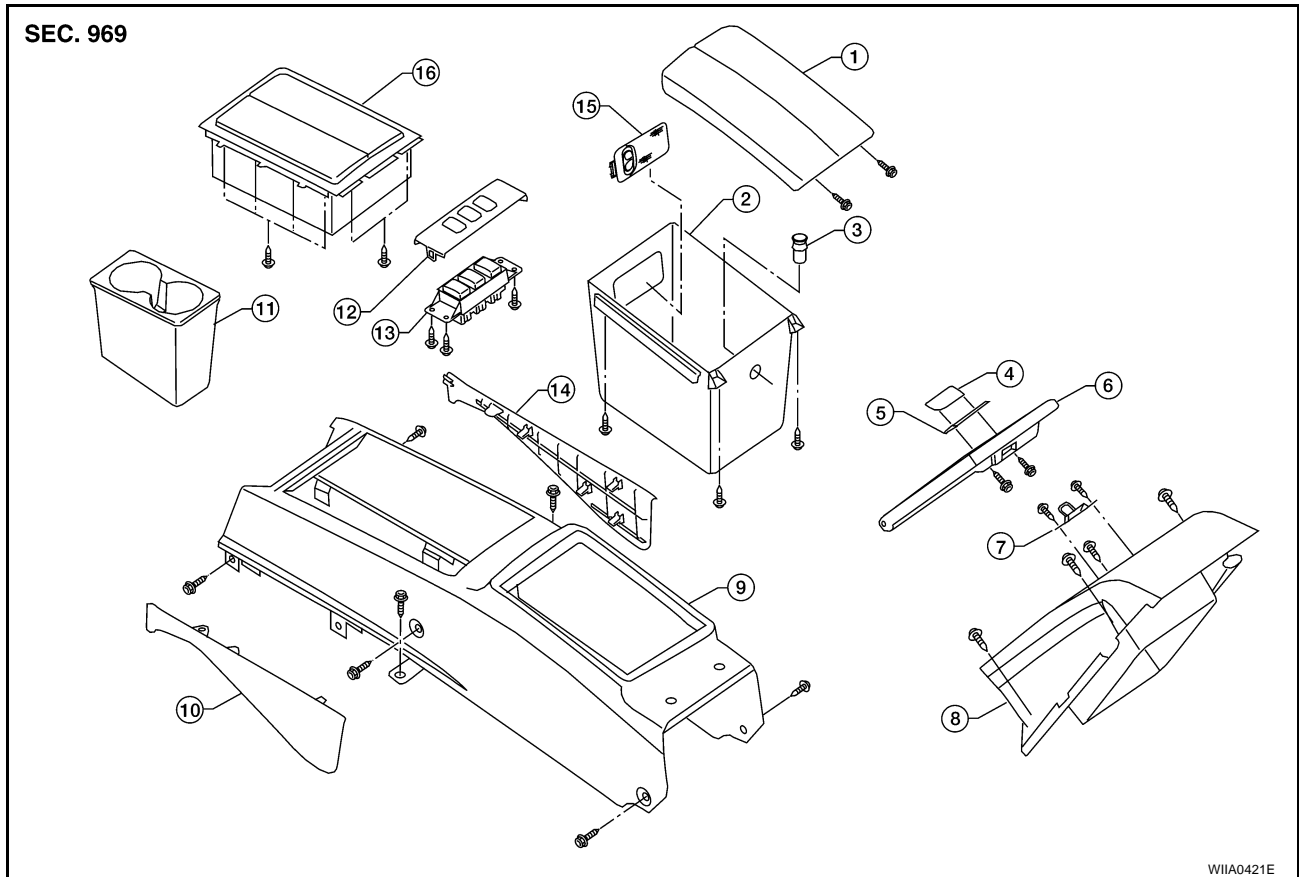
Installation

Installation is in the reverse order of removal.

CENTER CONSOLE ASSEMBLY

EIS007X4

Rear Center Console DISASSEMBLY AND ASSEMBLY



- | | | |
|------------------------------|--------------------------|-------------------------------------|
| 1. Rear console lid assembly | 2. Rear console tray | 3. Power point assembly |
| 4. Lock assembly | 5. Key cylinder | 6. Rear pass through lid assembly |
| 7. Striker | 8. Pass through assembly | 9. Rear center console |
| 10. Lower side cover, LH | 11. Cup holder assembly | 12. Switch finisher |
| 13. Switch assembly | 14. Lower side cover, RH | 15. Rear console lamp (if equipped) |
| 16. Front lid assembly | | |

Disassembly

1. Remove rear center console. Refer to [IP-18, "REMOVAL AND INSTALLATION"](#).
2. Remove cup holder assembly.
3. Remove screws and rear console lid assembly.
4. Disconnect harnesses and remove switch finisher and switch assembly.
 - Remove screws to separate switch finisher and switch assembly.
5. Remove screws and rear console tray.
 - Disconnect harnesses.
 - Remove power point assembly.
 - Remove rear console lamp (if equipped).
6. Remove screws and front lid assembly.
7. Remove screws and striker from rear pass through assembly.
8. Remove rear pass through lid assembly.
9. Remove screws, lock assembly and key cylinder.

Assembly

Assembly is in the reverse order of disassembly.

CENTER CONSOLE ASSEMBLY
