

SECTION **AP**

ADJUSTABLE PEDAL

A
B
C
D
E
F
G
H
J
K
L
M
N
O
P

CONTENTS

SERVICE INFORMATION	2	ADJUSTABLE PEDAL SYSTEM	3
PRECAUTIONS	2	Automatic Drive Positioner Adjustable Pedal	3
Precaution for Supplemental Restraint System (SRS) "AIR BAG" and "SEAT BELT PRE-TENSIONER"	2	Adjustable Pedal (Only Manual Operation Model)....	3
		Trouble Diagnosis	5
		Removal and Installation	6

AP

PRECAUTIONS

< SERVICE INFORMATION >

SERVICE INFORMATION

PRECAUTIONS

Precaution for Supplemental Restraint System (SRS) "AIR BAG" and "SEAT BELT PRE-TENSIONER"

INFOID:000000004277421

The Supplemental Restraint System such as "AIR BAG" and "SEAT BELT PRE-TENSIONER", used along with a front seat belt, helps to reduce the risk or severity of injury to the driver and front passenger for certain types of collision. This system includes seat belt switch inputs and dual stage front air bag modules. The SRS system uses the seat belt switches to determine the front air bag deployment, and may only deploy one front air bag, depending on the severity of a collision and whether the front occupants are belted or unbelted. Information necessary to service the system safely is included in the SRS and SB section of this Service Manual.

WARNING:

- To avoid rendering the SRS inoperative, which could increase the risk of personal injury or death in the event of a collision which would result in air bag inflation, all maintenance must be performed by an authorized NISSAN/INFINITI dealer.
- Improper maintenance, including incorrect removal and installation of the SRS, can lead to personal injury caused by unintentional activation of the system. For removal of Spiral Cable and Air Bag Module, see the SRS section.
- Do not use electrical test equipment on any circuit related to the SRS unless instructed to in this Service Manual. SRS wiring harnesses can be identified by yellow and/or orange harnesses or harness connectors.

ADJUSTABLE PEDAL SYSTEM

< SERVICE INFORMATION >

ADJUSTABLE PEDAL SYSTEM

Automatic Drive Positioner Adjustable Pedal

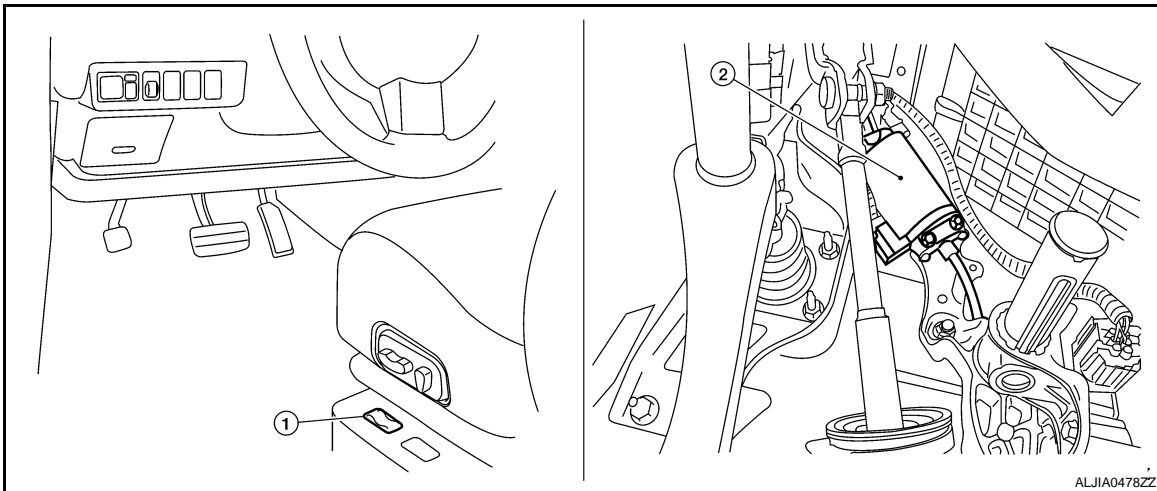
INFOID:000000004277422

Automatic drive positioner adjustable pedal. Refer to [SE-11, "Component Parts and Harness Connector Location"](#).

Adjustable Pedal (Only Manual Operation Model)

INFOID:000000004277423

COMPONENT PARTS AND HARNESS CONNECTOR LOCATION



1. Pedal adjusting switch B22

2. Pedal adjusting motor E109 (view with instrument lower panel LH removed)

SYSTEM DESCRIPTION

The adjustable pedal system power supply is controlled by the pedal adjusting switch.

Power is supplied at all times

- through 40A fusible link (letter **m**, located in the fuse and fusible link box)
- to circuit breaker-2 terminal 1
- through circuit breaker-2 terminal 2
- to pedal adjusting switch terminal 1.

Ground is supplied

- to pedal adjusting switch terminal 4
- through body grounds B7 and B19.

When pedal is adjusted forward, power is supplied

- through pedal adjusting switch terminal 3
- to pedal adjusting motor terminal 1.

Then ground is supplied

- to pedal adjusting motor terminal 2
- through pedal adjusting switch terminal 2
- through pedal adjusting switch terminal 4
- through body grounds B7 and B19.

With power and ground supplied, accelerator and brake pedals move forward.

When pedal is adjusted backward, power is supplied

- through pedal adjusting switch terminal 2
- to pedal adjusting motor terminal 2.

Then ground is supplied

- to pedal adjusting motor terminal 1
- through pedal adjusting switch terminal 3
- through pedal adjusting switch terminal 4
- through body grounds B7 and B19.

With power and ground supplied, accelerator and brake pedals move backward.

ADJUSTABLE PEDAL SYSTEM

< SERVICE INFORMATION >

Trouble Diagnosis

INFOID:000000004277426

WORK FLOW

1. Check the symptom and customer's requests.
2. Perform the preliminary check. Refer to "PRELIMINARY CHECK".
3. According to the trouble diagnosis chart, repair or replace the cause of the malfunction. Refer to "TROUBLE DIAGNOSIS CHART BY SYMPTOM".
4. Does adjustable pedal system operate normally?
YES: GO TO 5.
NO: GO TO 3.
5. Inspection End.

PRELIMINARY CHECK

1.CHECK ADJUSTABLE PEDAL MECHANISM

Check the following.

- Movable part of accelerator pedal or brake pedal is deformed or there is foreign material in it.
- Accelerator pedal or brake pedal is deformed or broken.

OK or NG

- OK >> Preliminary check is OK.
NG >> Repair or replace the malfunctioning part and check again.

TROUBLE DIAGNOSIS CHART BY SYMPTOM

NOTE:

Always check the WORK FLOW before troubleshooting. Refer to "WORK FLOW".

Symptom	Diagnosis/service procedure	Reference page
Adjustable pedal system does not operate.	1. Pedal adjusting switch power supply and ground circuit inspection.	AP-5, "Trouble Diagnosis"
	2. Pedal adjusting motor circuit inspection.	AP-5, "Trouble Diagnosis"
	3. Replace pedal adjusting motor.	AP-6, "Removal and Installation"

Pedal Adjusting Switch Power Supply And Ground Inspection

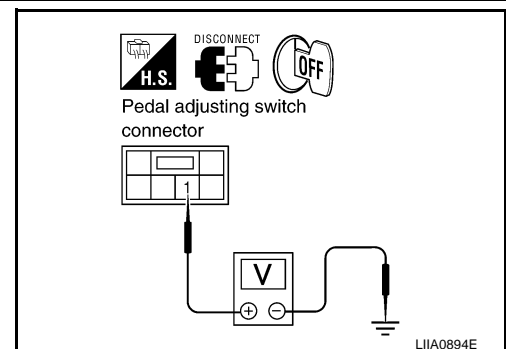
1.CHECK PEDAL ADJUSTING SWITCH POWER SUPPLY

1. Turn ignition switch OFF.
2. Disconnect pedal adjusting switch connector.
3. Check voltage between pedal adjusting switch connector B22 terminal 1 and ground.

1 - Ground : Battery voltage

OK or NG

- OK >> GO TO 2.
NG >> Repair or replace harness.



2.CHECK PEDAL ADJUSTING SWITCH GROUND CIRCUIT

ADJUSTABLE PEDAL SYSTEM

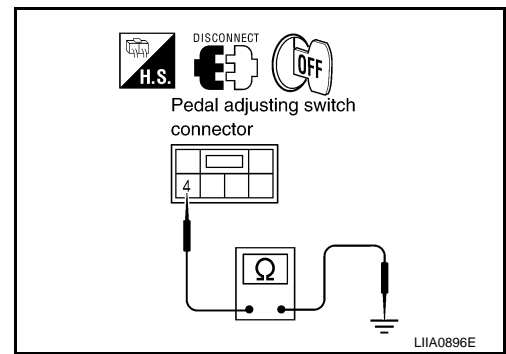
< SERVICE INFORMATION >

Check continuity between pedal adjusting switch connector B22 terminal 4 and ground.

4 - Ground : Continuity should exist.

OK or NG

- OK >> Replace pedal adjusting switch.
- NG >> Repair or replace harness.

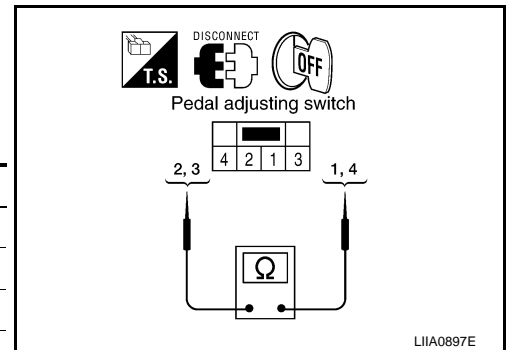


Pedal Adjusting Motor Circuit Inspection

1. CHECK PEDAL ADJUSTING SWITCH

1. Turn ignition switch OFF.
2. Disconnect pedal adjusting switch.
3. Check continuity between pedal adjusting switch terminals as follows.

Terminals	Condition	Continuity
3	1	Pedal adjusting switch forward. Yes
	1	Pedal adjusting switch neutral. No
	4	Pedal adjusting switch backward. Yes
	4	Pedal adjusting switch neutral. No
2	1	Pedal adjusting switch backward. Yes
	1	Pedal adjusting switch neutral. No
	4	Pedal adjusting switch forward. Yes
	4	Pedal adjusting switch neutral. No



OK or NG

- OK >> GO TO 2.
- NG >> Replace pedal adjusting switch.

2. CHECK PEDAL ADJUSTING MOTOR HARNESS

1. Disconnect pedal adjusting motor.
2. Check continuity between pedal adjusting switch connector B22 terminals 2, 3 and pedal adjusting motor connector E109 terminals 1, 2.

2 - 2 : Continuity should exist.

3 - 1 : Continuity should exist.

3. Check continuity between pedal adjusting switch connector B22 terminals 2, 3 and ground.

2 - Ground : Continuity should not exist.

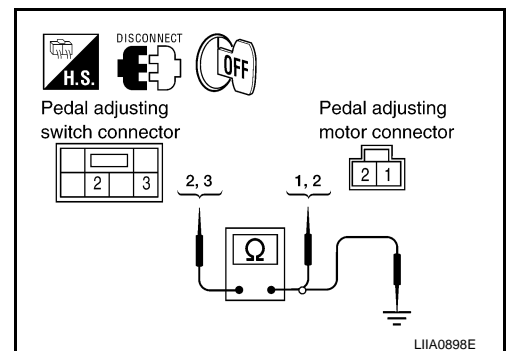
3 - Ground : Continuity should not exist.

OK or NG

- OK >> Replace pedal adjusting motor. Refer to [ACC-3. "Removal and Installation"](#).
- NG >> Repair or replace harness.

Removal and Installation

Refer to [ACC-3. "Removal and Installation"](#).



INFOID:000000004277427