

SECTION **EX**
EXHAUST SYSTEM

A
EX
C
D
E
F
G
H
I
J
K
L
M

CONTENTS

PREPARATION	2	Components	3
Special Service Tools	2	Removal and Installation	4
Commercial Service Tools	2	REMOVAL	4
EXHAUST SYSTEM	3	INSTALLATION	4
Checking Exhaust System	3	INSPECTION AFTER INSTALLATION	5

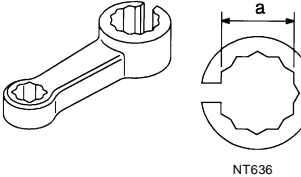
PREPARATION

PREPARATION

PFP:00002

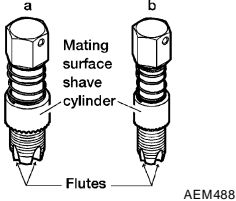

Special Service Tools

EBS00T50

Tool number Tool name	Description
KV10114400 (J-38365) Heated oxygen sensor wrench <div style="text-align: center;">  <p>NT636</p> </div>	Loosening or tightening heated oxygen sensor a: 22 mm (0.87 in)

Commercial Service Tools

EBS00T5P

Tool name	Description
Heated oxygen sensor thread cleaner <div style="text-align: center;">  <p>AEM488</p> </div>	Reconditioning the exhaust system threads before installing a new heated oxygen sensor (Use with anti-seize lubricant shown below.) a: 18 mm (0.71 in) dia. for zirconia heated oxygen sensor b: 12 mm (0.47 in) dia. for titania heated oxygen sensor
Anti-seize lubricant (Permatex 133AR or equivalent meeting MIL specification MIL-A-907) <div style="text-align: center;">  <p>AEM489</p> </div>	Lubricating heated oxygen sensor thread cleaner when reconditioning exhaust system threads

EXHAUST SYSTEM

PF20100

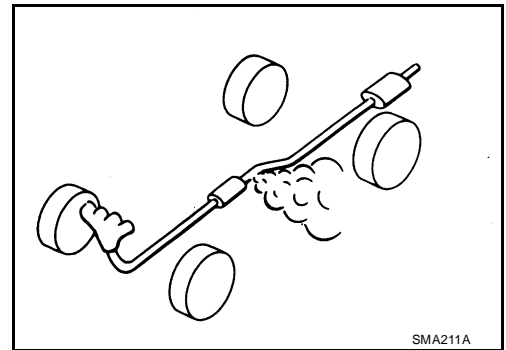
EXHAUST SYSTEM

Checking Exhaust System

EBS00TSQ

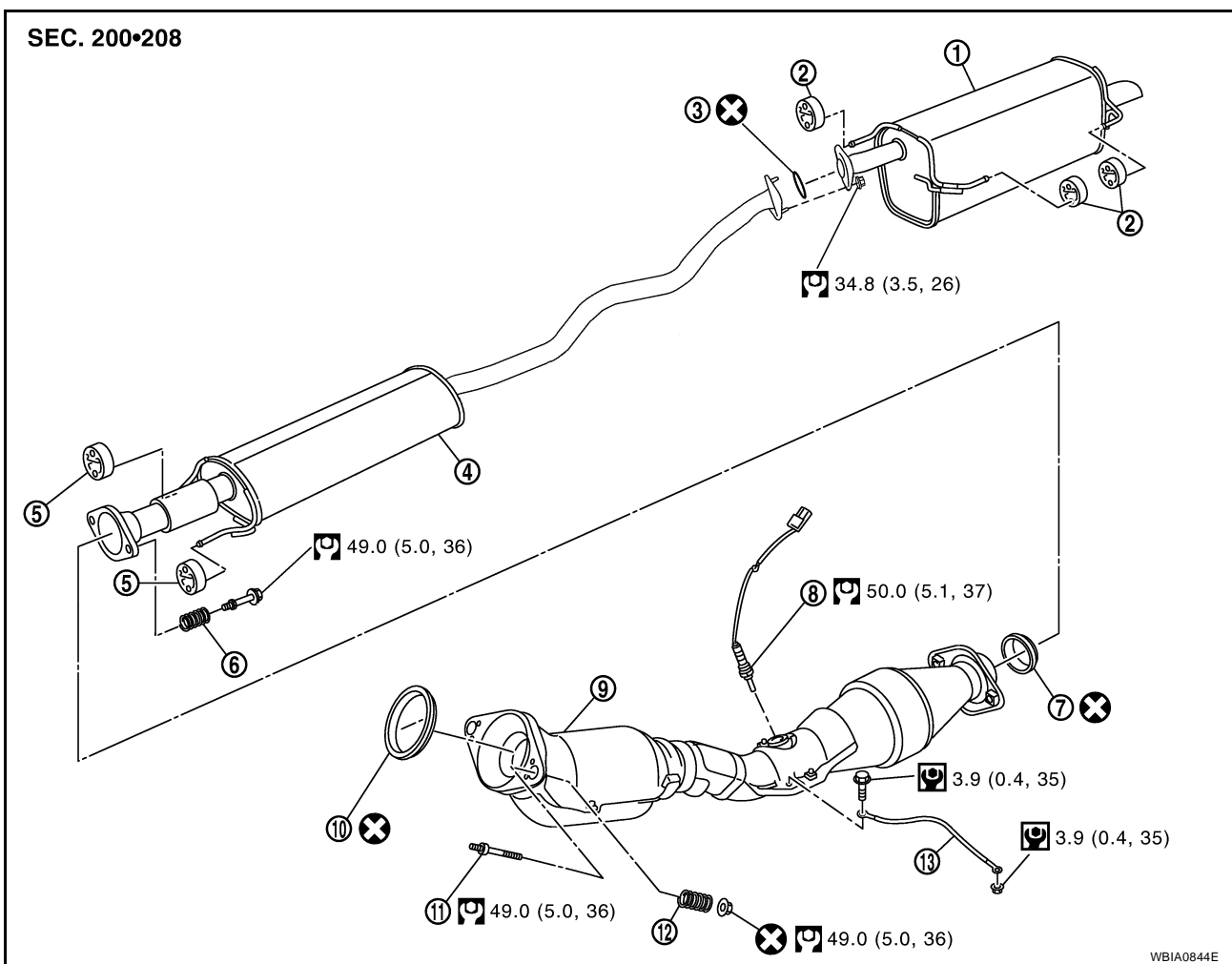
Check exhaust pipes, muffler and mounting for improper attachment, leaks, cracks, damage or deterioration.

- If necessary, repair or replace damaged parts.



Components

EBS00TSR



- | | | |
|-------------------|---------------------------|-----------------------|
| 1. Main muffler | 2. Mounting rubber | 3. Ring gasket |
| 4. Center muffler | 5. Mounting rubber | 6. Spring |
| 7. Seal bearing | 8. Heated oxygen sensor 2 | 9. Exhaust front tube |
| 10. Seal bearing | 11. Stud bolt | 12. Spring |
| 13. Ground cable | | |

EXHAUST SYSTEM

EBS00TSS

Removal and Installation

REMOVAL

CAUTION:

- Be sure to use genuine NISSAN exhaust system parts or equivalents which are specially designed for heat resistance, corrosion resistance and shape.
- Perform the operation with the exhaust system fully cooled down because the system will be hot just after the engine stops.
- Be careful not to cut your hand on heat insulator edge.

1. Disconnect harness connector of heated oxygen sensor 2.
 - Using Tool, remove heated oxygen sensor 2.

CAUTION:

Be careful not to damage heated oxygen sensor 2.

Tool number : KV10114400 (J-38365)

2. Disconnect each joint and mounting rubber.

INSTALLATION

Installation is in the reverse order of removal.

CAUTION:

- Always replace exhaust gaskets and seal bearings with new ones when installing.
- Discard any heated oxygen sensor 2 which has been dropped from a height of more than 0.5 m (19.7 in) onto a hard surface such as a concrete floor; use a new one.
- Before installing a new heated oxygen sensor 2, clean exhaust system threads using the heated oxygen sensor thread cleaner and apply anti-seize lubricant (commercial service tool).
- Do not over tighten heated oxygen sensor 2. Doing so may cause damage to the heated oxygen sensor 2, resulting in the “MIL” coming on.
- Remove deposits from the sealing surface of each connection. Connect them securely to avoid exhaust leakage.
- Temporarily tighten nuts on the exhaust manifold side and bolts on the vehicle side. Check each part for unusual interference, and then tighten them to the specified torque.
- When installing each mounting rubber, avoid twisting or unusual extension in up/down and right/left directions.

Exhaust Manifold to Exhaust Front Tube

1. Securely insert seal bearing (2) into exhaust manifold (1) side in the direction shown.

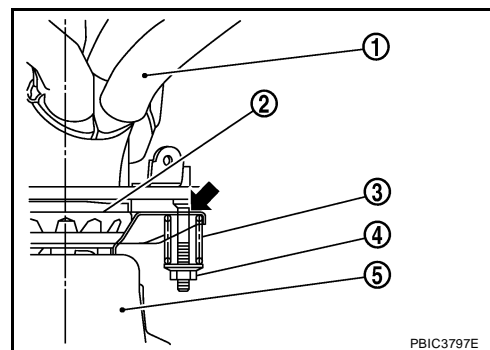
- Exhaust front tube (5)

CAUTION:

Be careful not to damage seal bearing surface when installing.

2. Install spring (3), tighten nut (4).

- Be careful that the stud bolt nut does not interfere with the flanged area (←).
- Make sure the spring (3) sits properly on the flange surface by aligning it to the locator dimples.



EXHAUST SYSTEM

Exhaust Front Tube to Center Muffler

1. Securely insert seal bearing (2) into exhaust front tube (1) side in the direction shown.

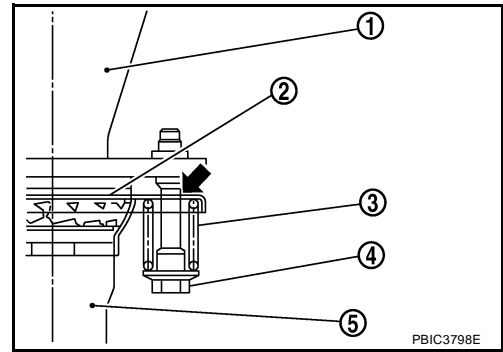
- Center muffler (5)

CAUTION:

Be careful not to damage seal bearing surface when installing.

2. With spring (3), tighten bolt (4).

- Be careful that the stud bolt does not interfere with the flanged area (←).
- Make sure the spring (3) sits properly on the flange surface by aligning it to the locator dimples.



INSPECTION AFTER INSTALLATION

- With the engine running, check exhaust tube joints for exhaust leakage and unusual noise.
- Check to ensure that brackets and mounting rubbers are installed properly and free from undue stress. Improper installation could result in excessive noise and vibration.

A

EX

C

D

E

F

G

H

I

J

K

L

M

EXHAUST SYSTEM
